

### New Displacement

From January 1st to December 31st 2023, 7,211 households (39,417 individuals) were displaced from 20 different governorates (258 districts). They distributed over 10 governorates (54 districts).

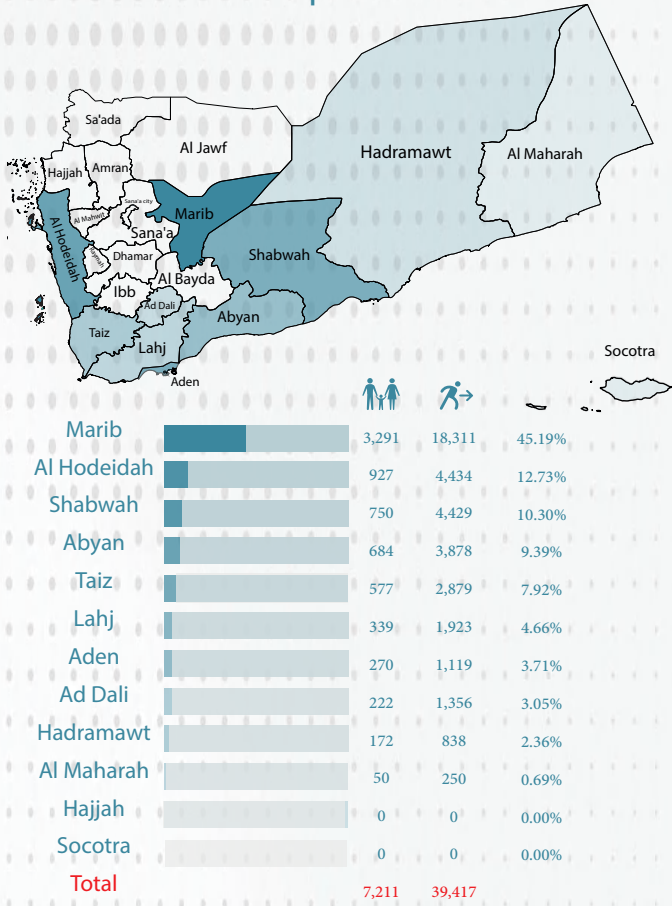
### IDPs Departed

From January 1st to December 31st 2023, the Executive unit monitored 202 households (903 individuals) who left their current displacement governorates to other governorates. They left from 9 different governorates (31 districts) and distributed over 10 governorates (31 districts).

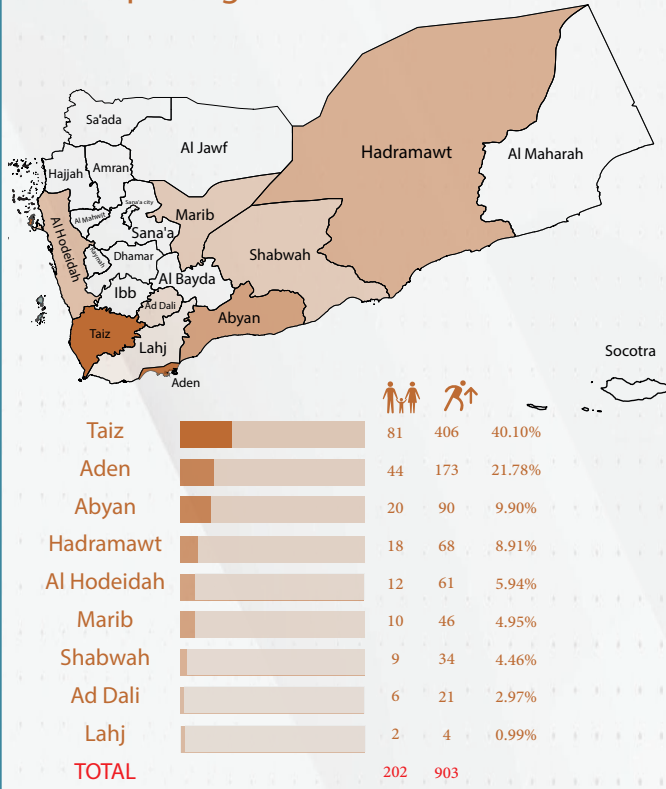
### IDP Returnees

From January 1st to December 31st 2023, the Executive Unit tracked 829 IDP households (3,994 individuals) who returned to their origin areas. These IDP households returned from 9 different governorates (29 districts) to 7 governorates (43 districts).

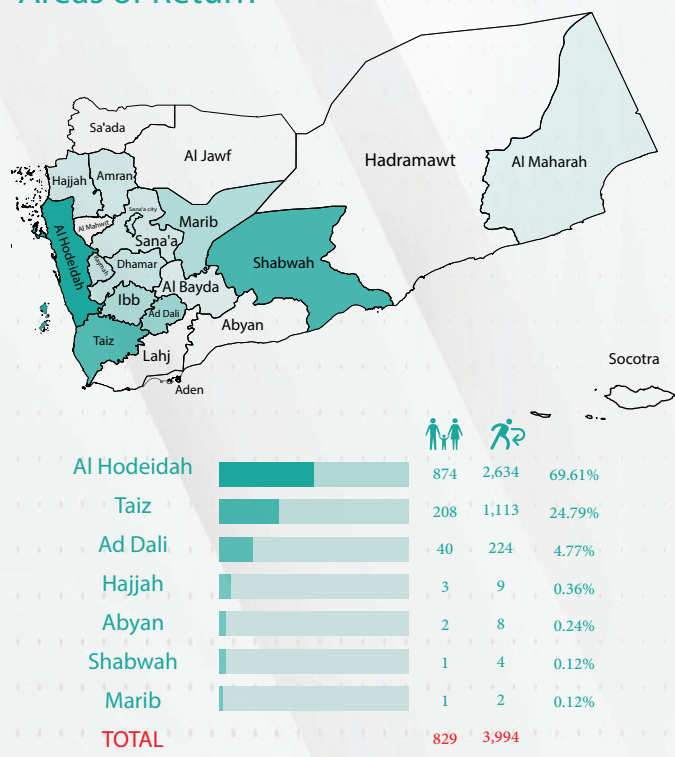
### Current Areas of Displacement



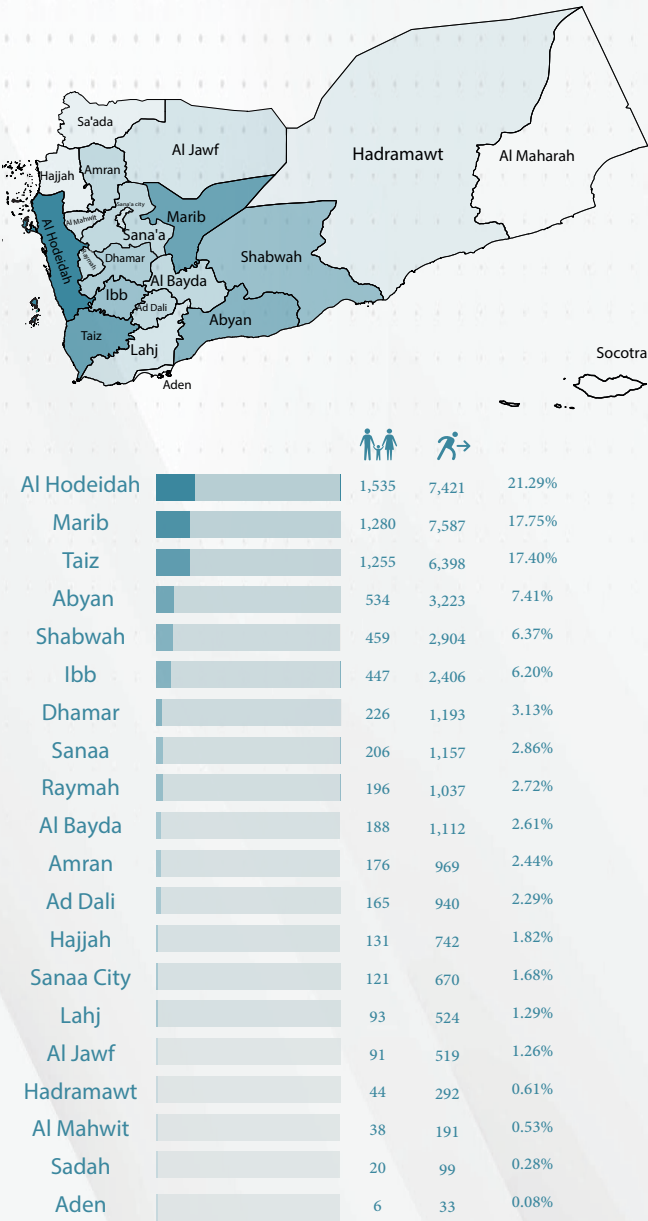
### IDPs Departing Areas



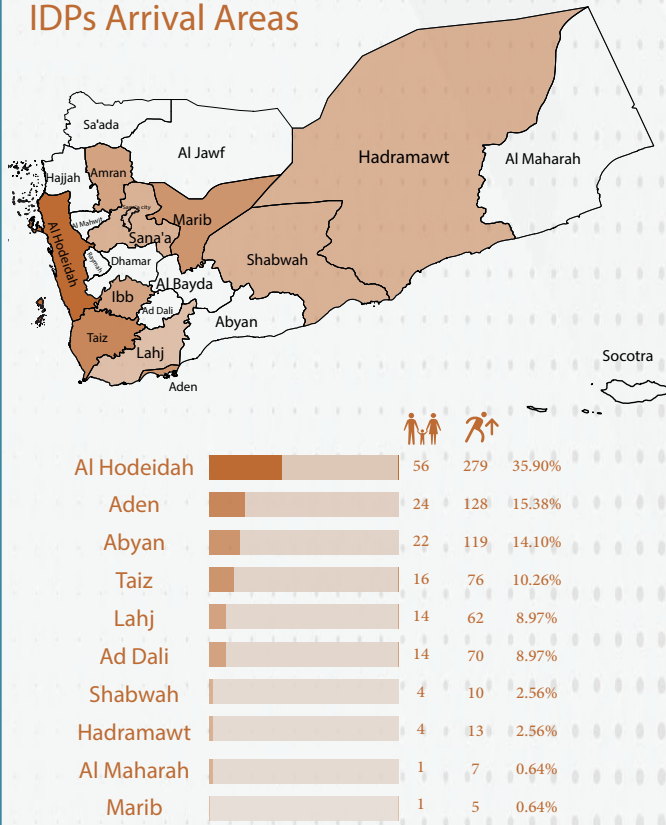
### Areas of Return



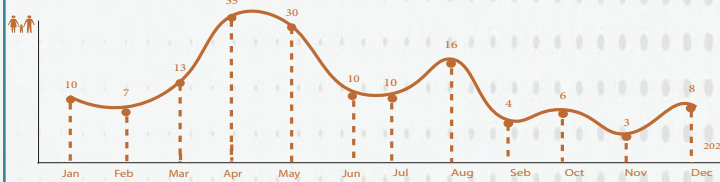
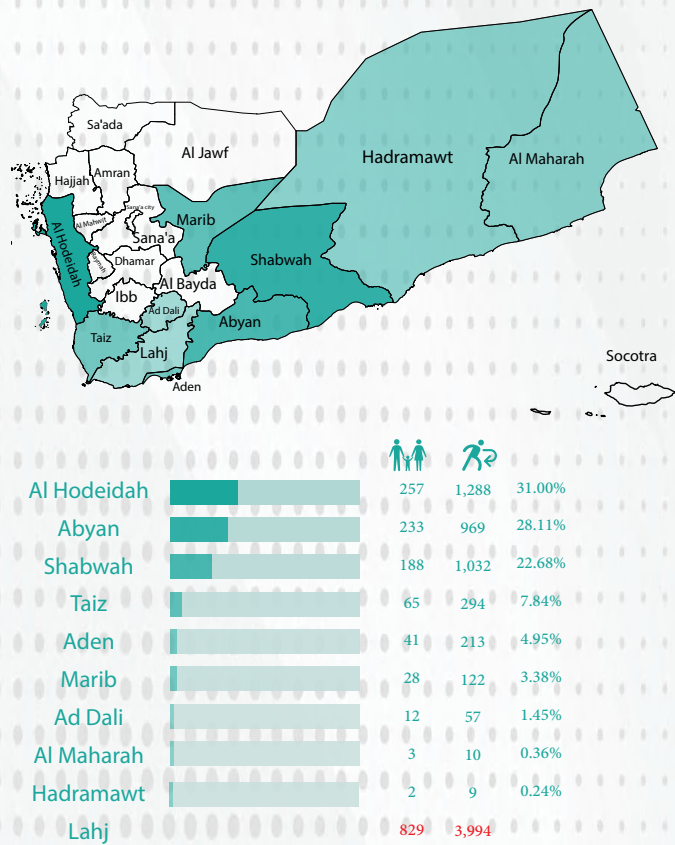
### Origin Areas of Displacement



### IDPs Arrival Areas



### Areas from which IDPs Returned



### Rapid Response Mechanism (RRM)

The number of new displaced households received RRM during 2023 was 1,928 (26%).

