

Republic of Yemen
Prime Ministry
Executive Unit
for IDPs Camp Management



الجمهورية اليمنية
رئاسة الوزراء
الوحدة التنفيذية
لإدارة مخيمات النازحين

Displacement Tracking Report (DTR)

Quarterly Report
Second Quarter

01 Apr - 30 Jun

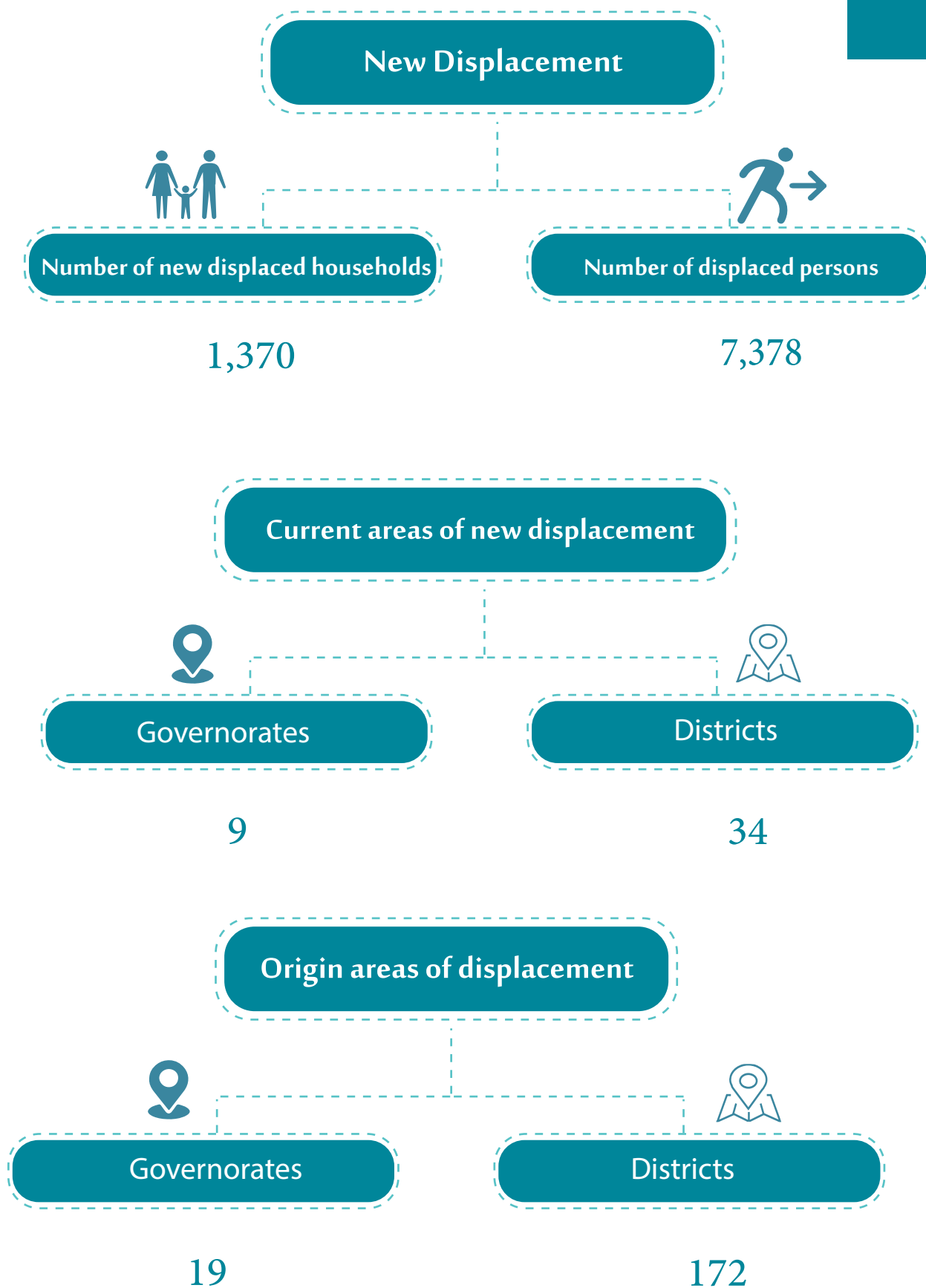
2023



Ex.U.IDPs



New Displacement Movement



New Displacement

During the second quarter of 2023 , approximately (1,370 households) (7,378 individuals) were newly displaced. These households have been come from 19 governorates (172 districts) and they were received by 9 governorates (34 districts).

The main reasons for displacement:

- 1 - Armed conflict
 - 2 - Searching for livelihood opportunities
 - 3 - Violations and prosecutions
- And other reasons...

* **Internally displaced persons (IDPs)** : Persons or groups of persons who had to flee or to leave their homes or places of habitual residence, in particular as a result of or in order to avoid the effects of armed conflict, situations of violence, violations of human rights or natural disasters, and who have not crossed an internationally recognized state border.

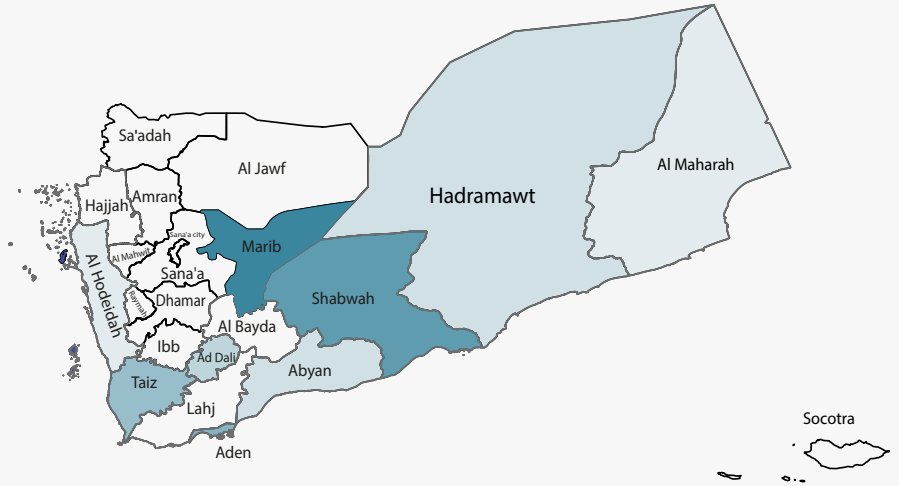


Current Areas of New Displacement

Governorates

During the second quarter of 2023, it was recorded that nearly 9 governorates received the new displacement.

Marib		73.58%	1,008	5,435
Shabwah		10.29%	141	910
Aden		4.89%	67	289
Taiz		4.53%	62	301
Ad Dali		1.97%	27	138
Abyan		1.39%	19	88
Hadramawt		1.39%	19	85
Al Maharah		1.02%	14	71
Al Hodeidah		0.95%	13	61
TOTAL			1,370	7,378

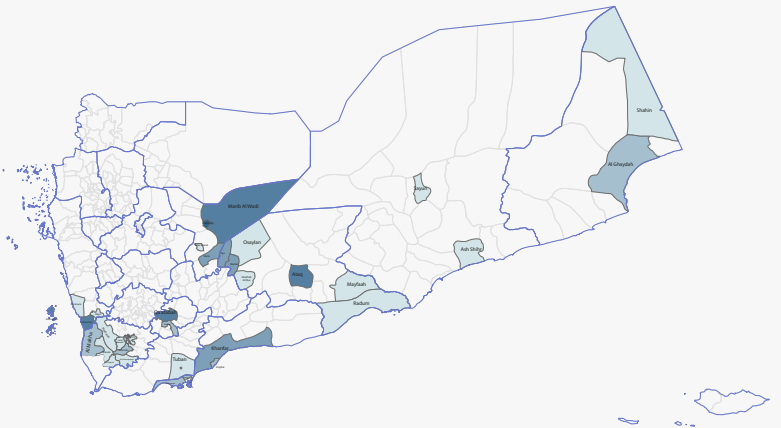


Districts

During the second quarter of 2023, it was recorded that nearly 34 districts received the new displacement.

Districts	p.c. %		
Marib City	47.45%	650	3,392
Harib	23.28%	319	1,821
Markhah Al Olya	5.40%	74	569
Marib	2.63%	36	203
Mayfaah	2.34%	32	169
Al Burayqah	1.75%	24	90
Qatabah	1.53%	21	107
Zinjibar	1.39%	19	88
Al Mansurah	1.31%	18	85
Ayn	1.17%	16	82
Ash Shihr	1.02%	14	58
Al Ghaydhah	1.02%	14	71
Khur Maksar	0.95%	13	66
Maqbanah	0.88%	12	60
Al Mualla	0.88%	12	48
Al Khukhah	0.88%	12	57
Sabir-	0.73%	10	48
Al Mawadim			

Districts	p.c. %		
Al Maafer	0.73%	10	57
Ataq	0.73%	10	44
Mawza	0.66%	9	31
Jabal Habashi	0.58%	8	45
Bayhan	0.58%	8	39
Ad Dali	0.44%	6	31
Al Misrakh	0.29%	4	13
Ash Shamayatayn	0.29%	4	19
Al Abr	0.22%	3	21
Raghwan	0.22%	3	19
Al Mudhaffar	0.15%	2	11
Al Qahirah	0.15%	2	12
Nisab	0.07%	1	7
Salah	0.07%	1	5
Sayun	0.07%	1	3
Hays	0.07%	1	4
Ghayl Bawazir	0.07%	1	3



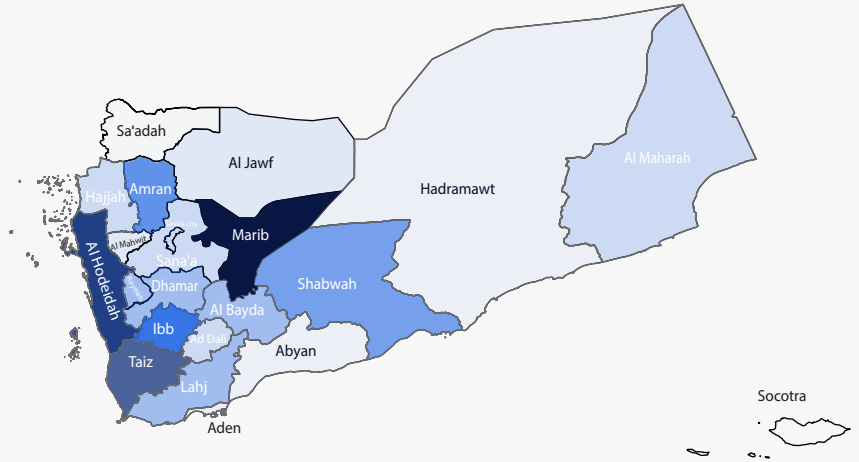


Areas of Origin before Displacement

Governorates

During the second quarter of 2023, it was reported that the new IDPs have come from nearly 19 governorates.

Governorate	p.c. %	Family Icon	Individual Icon
Marib	34.38%	471	2,679
Al Hodeidah	11.02%	151	728
Taiz	10.73%	147	738
Ibb	7.52%	103	487
Amran	6.79%	93	487
Shabwah	6.72%	92	669
Dhamar	4.23%	58	276
Raymah	3.50%	48	222
Al Bayda	3.43%	47	231
Sanaa	2.55%	35	191
Sanaa City	2.41%	33	181
Ad Dali	2.12%	29	138
Hajjah	2.12%	29	163
Al Mahwit	0.88%	12	59
Al Jawf	0.80%	11	69
Sadah	0.29%	4	23
Abyan	0.22%	3	12
Hadramawt	0.22%	3	15
Aden	0.07%	1	10



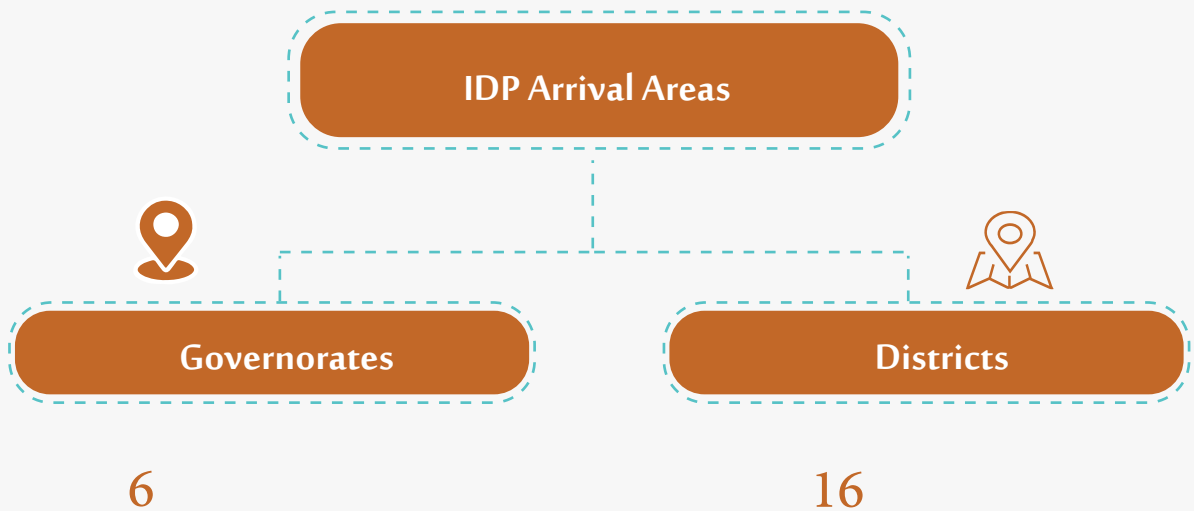
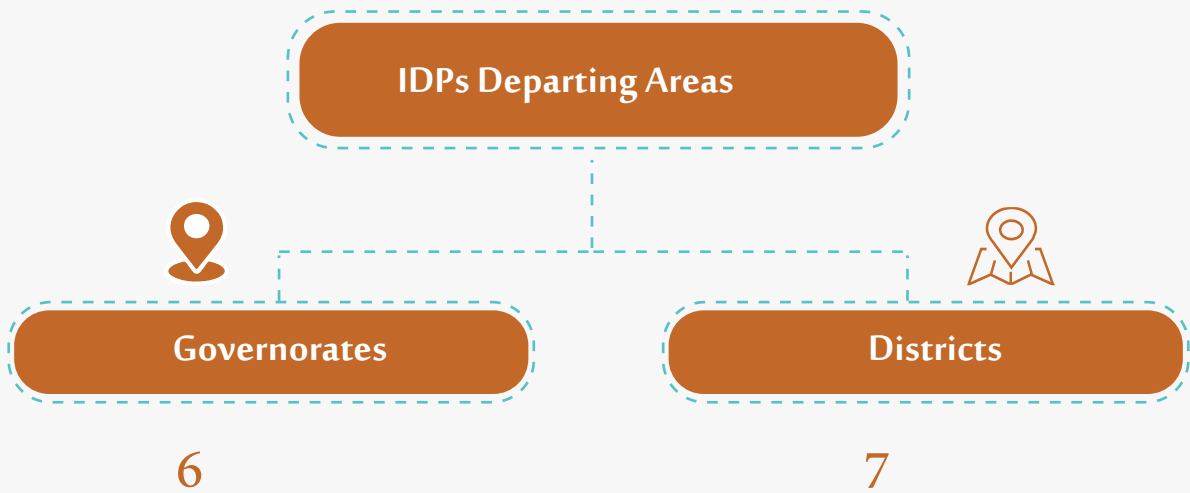
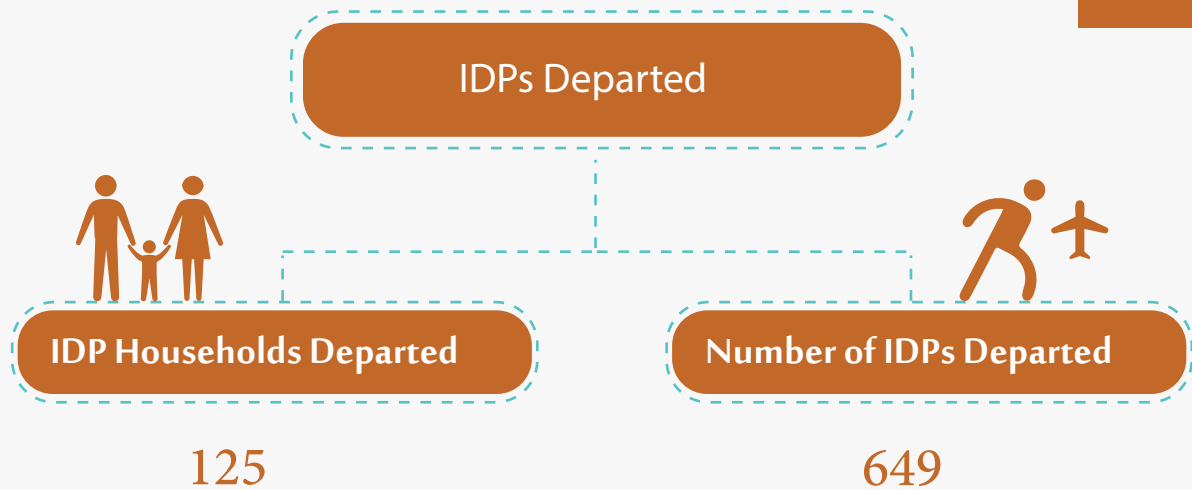
Districts

During the second quarter of 2023, it was reported that the new IDPs have come from nearly 172 districts.

Districts	p.c. %	Family Icon	Individual Icon	Districts	p.c. %	Family Icon	Individual Icon	Districts	p.c. %	Family Icon	Individual Icon	Districts	p.c. %	Family Icon	Individual Icon
Harib	26.20%	133	359	Suwayr	0.66%	9	39	As Sawadiyah	0.36%	5	27	Alluhayah	0.15%	2	9
Markhah Al Olya	5.47%	107	75	Nihm	0.58%	8	52	Al Mawasit	0.36%	5	24	Harib Al Qaramish	0.15%	2	4
Al Jubah	2.85%	82	39	Otmah	0.58%	8	34	Khawlan	0.36%	5	28	Harf Sufyan	0.15%	2	12
Maqbanah	2.70%	66	37	Dawran Anis	0.58%	8	40	Al Husha	0.29%	4	24	Dhulaymat Habur	0.15%	2	3
Al Ashah	2.63%	62	36	Al Qahirah	0.58%	8	38	Dhamar City	0.29%	4	18	Al Mashannah	0.15%	2	11
Bayt Al Faqih	1.68%	55	23	Al Jarrahi	0.58%	8	41	Bilad Attaam	0.29%	4	20	Hajjah	0.15%	2	11
Al Qafr	1.61%	52	22	Zabid	0.58%	8	28	Al Hawak	0.29%	4	16	Al Maafer	0.15%	2	10
As Salafiyah	1.61%	51	22	Al Misrah	0.58%	8	42	Mazhar	0.29%	4	18	Al Wehdah	0.15%	2	10
Hays	1.39%	45	19	Ataq	0.58%	8	47	Arhab	0.29%	4	24	Old City	0.15%	2	12
Al Marawiah	1.24%	40	17	Jabal Murad	0.51%	7	42	Badan	0.29%	4	15	As Safiyah	0.15%	2	9
Qatabah	1.24%	35	17	Mahliyah	0.51%	7	39	Rada	0.29%	4	22	Hamdan	0.15%	2	10
Dhi As Sufal	1.17%	33	16	Hazm Al Odayn	0.51%	7	36	Al Mahwit City	0.29%	4	24	Al Mutun	0.15%	2	12
At Taiziyah	1.09%	28	15	Ad Durayhimi	0.51%	7	30	Al Makha	0.29%	4	15	Al Abr	0.15%	2	11
Sharab Ar Rawmah	1.09%	23	15	Al Bayda	0.51%	7	18	Mudhaykhirah	0.29%	4	9	Mabyan	0.15%	2	9
At Tuhayta	1.09%	23	15	Salah	0.51%	7	35	Sanhan wa Bani Bahlul	0.29%	4	14	As Saiyani	0.15%	2	8
Jabal Habashi	1.02%	21	14	Hayfan	0.51%	7	40	Wusab Al Aali	0.29%	4	16	Al Khukhah	0.15%	2	10
Al Jabin	0.95%	21	13	Al Hazm	0.51%	7	45	Az Zuhrah	0.29%	4	28	Al Khabt	0.15%	2	9
Bajil	0.88%	20	12	Ans	0.51%	7	40	Al Mansuriyah	0.22%	3	18	Maswar	0.15%	2	11
Al Hali	0.80%	20	11	Nati	0.44%	6	31	Thula	0.22%	3	18	Hujh	0.15%	2	7
Al Abdiyah	0.80%	20	11	Al Odayn	0.44%	6	33	Al Mahabishah	0.22%	3	20	Al Manar	0.15%	2	11
Ibb	0.80%	19	11	Al Mina	0.44%	6	36	Al Malajim	0.22%	3	15	Razih	0.15%	2	10
Maghrib Ans	0.80%	19	11	Rahabah	0.44%	6	42	Al Hada	0.22%	3	18	Mawza	0.15%	2	7
Qafat Odhar	0.80%	19	11	Jabal Ras	0.44%	6	28	Dimnat Khadir	0.22%	3	19	Ath Thawrah	0.15%	2	8
Marib City	0.73%	18	10	Jahaf	0.44%	6	26	Bani Sad	0.22%	3	8	As Sabin	0.15%	2	12
Shuub	0.73%	18	10	Bani Matar	0.36%	5	21	Jihanah	0.22%	3	19	Sirwah	0.07%	1	6
Main	0.73%	17	10	Sharas	0.36%	5	23	Hufash	0.22%	3	18	Kuhlan Ash Sharaf	0.07%	1	5
Jiblah	0.73%	15	10	Al Jafariyyah	0.36%	5	29	Bani Al Harith	0.22%	3	16	As Sawmaah	0.07%	1	4
Dhi Naim	0.73%	15	10	Sharab As Salam	0.36%	5	21	Ash Shamayayayn	0.22%	3	14	Al Makhadir	0.07%	1	3
Shaharah	0.66%	14	9	Ar Radmah	0.36%	5	26	Al Bayda City	0.22%	3	15	Kharif	0.07%	1	5
Marib City	0.66%	14	9	Marib	0.36%	5	30	Ash Shahil	0.22%	3	19	Bani Hushaysh	0.07%	1	9
Amran	0.66%	14	9	Az Zahir - Al Bayda	0.36%	5	31	Az Zaydah	0.22%	3	17	Sadah	0.07%	1	7
Hobeish	0.66%	14	9	Sabir Al Mawadim	0.36%	5	23	Markhah As Sufia	0.22%	3	14	Aflah Ash Sham	0.07%	1	7
Jabal Ash sharq	0.66%	14	9	Abs	0.36%	5	30	Osaylan	0.22%	3	18	Qarah	0.07%	1	6
Raghwan	0.66%	14	9	Mawiyah	0.36%	5	26	Eyal Surayh	0.22%	3	14	Sayun	0.07%	1	4
				Majzar	0.36%	5	31	Lawdar	0.22%	3	12	Kushar	0.07%	1	4



IDPs Departure Movement



IDPs Departure

During the second quarter of 2023, approximately (125 households) (649 individuals) left their current locations of displacement. These households departed from 6 governorates (7 districts), and 8 governorates (16 districts) received them.

The main reasons for displacement:

1. Renewed armed conflict
 2. Searching for better livelihood opportunities
 3. Violations and prosecutions
 4. Forced eviction
 5. Desire to return home
 6. Inability to pay rent
 7. Fires and torrents
 8. Diseases and epidemics
 9. IDPs departed do not receive support from organizations.
- And other reasons...

*IDPs Departed: They are the IDPs who left their current governorates of displacement for other ones.

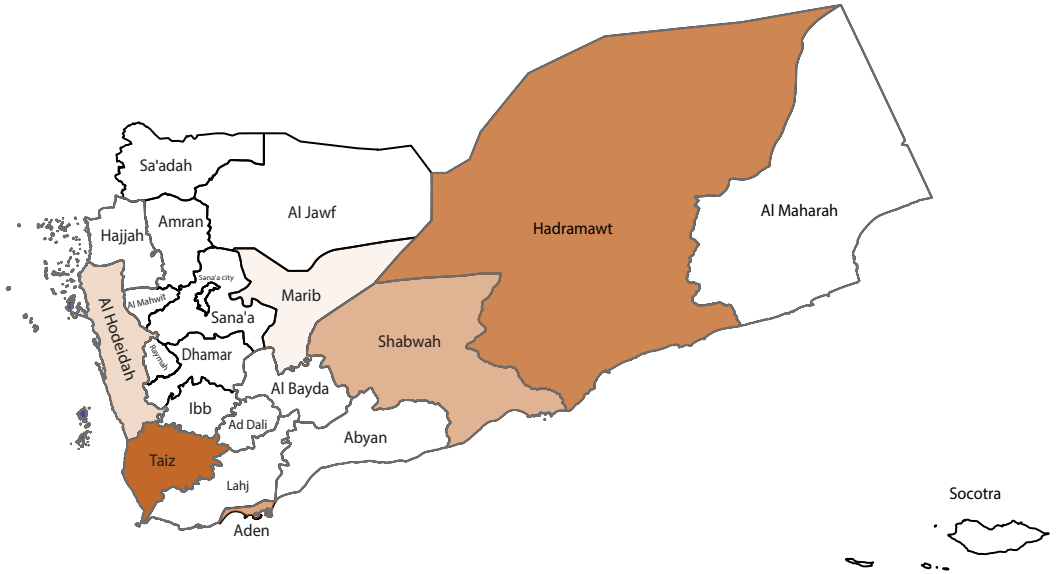


IDPs Departing Areas

Governorates

During the second quarter of 2023, IDPs departed from nearly 6 governorates to

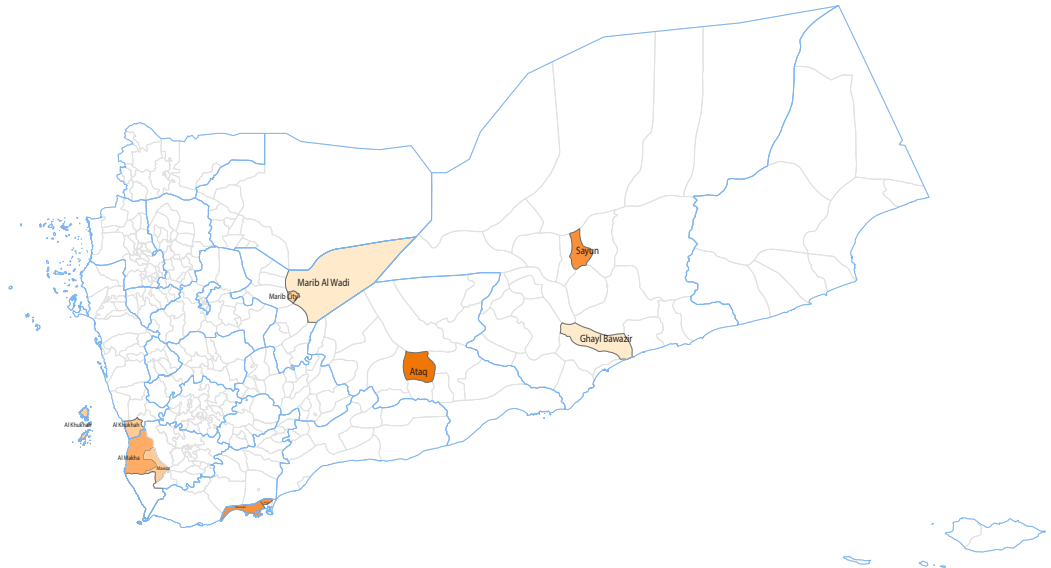
Taiz	69.49%	78	451
Aden	12.17%	16	79
Hadramawt	8.32%	13	54
Shabwah	4.62%	8	30
Marib	3.24%	6	21
Al Hodeidah	2.16%	4	14
TOTAL		125	649



Districts

During the second quarter of 2023, IDPs have departed from nearly 7 districts to

Districts	p.c. %		
Mawza	62.40%	78	451
Ash Shihr	10.40%	13	54
Al Burayqah	7.20%	9	41
Mayfaah	6.40%	8	30
Al Mansurah	5.60%	7	41
Marib City	4.80%	6	21
Al Khukhah	3.20%	4	14



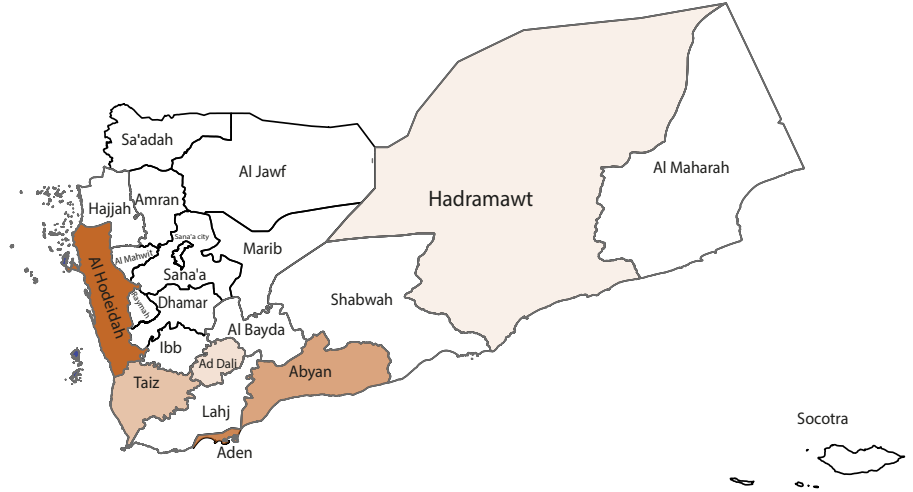


IDPs Arrival Areas

Governorates

During the second quarter of 2023, It was recorded that the new IDPs arrived to nearly 6 governorates.

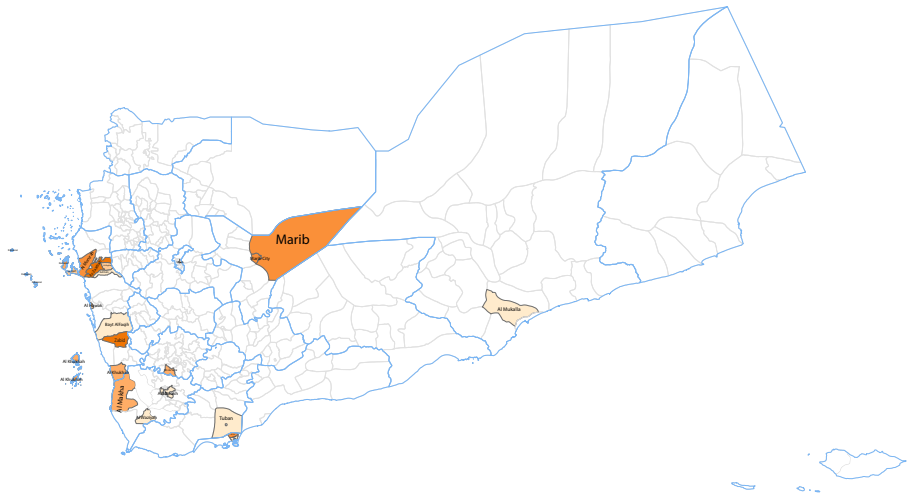
Governorates	p.c. %		
Al Hodeidah	35.29%	30	162
Aden	25.93%	22	119
Abyan	20.48%	16	94
Taiz	13.07%	11	60
Ad Dali	3.27%	5	15
Hadramawt	1.96%	3	9



Districts

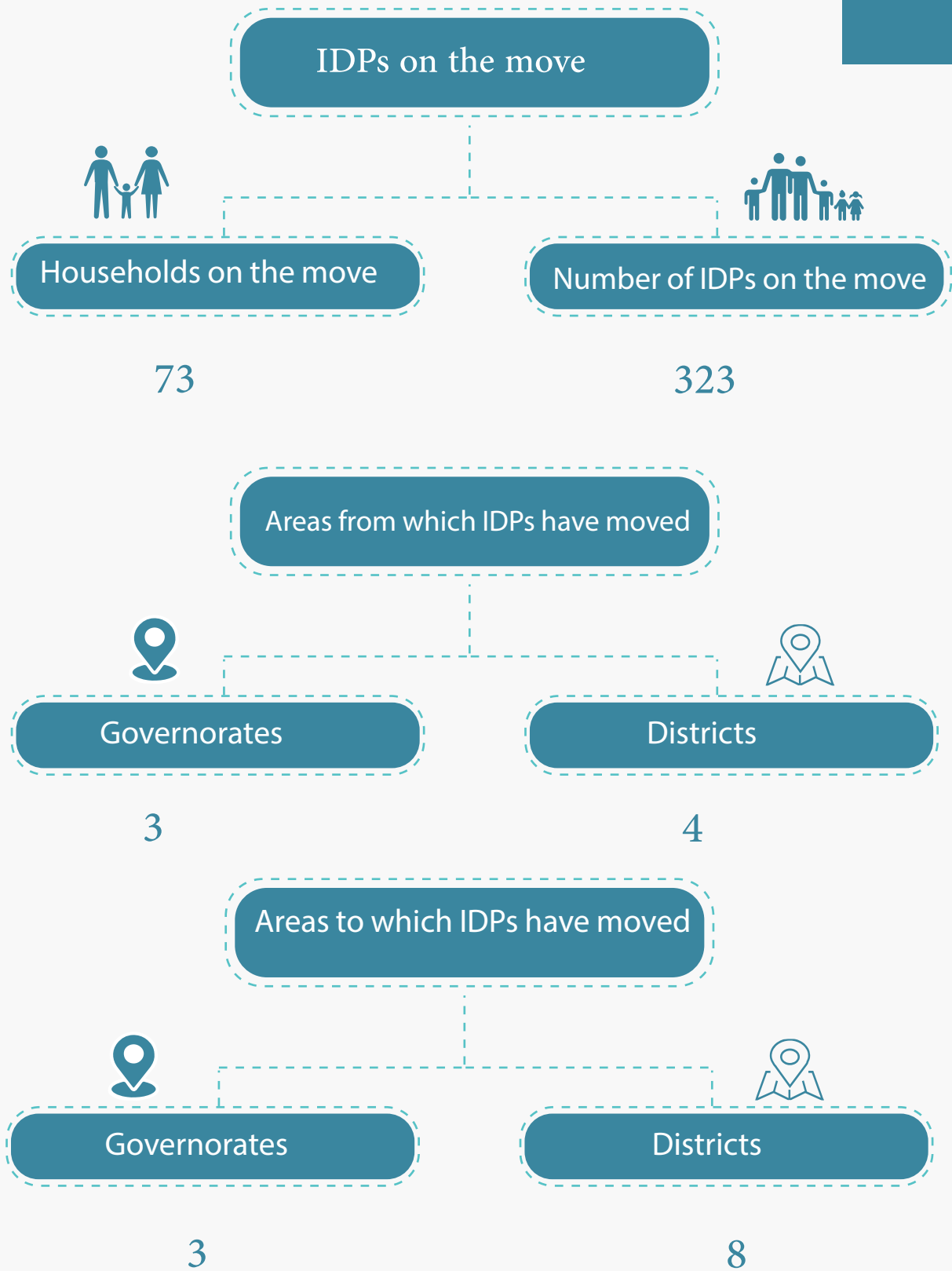
During the second quarter of 2023, it was reported that the new IDPs arrived to nearly 16 districts.

Districts	p.c. %		
Ad Durayhimi	24.78%	28	151
Al Mansurah	17.70%	20	115
Al Odayn	15.04%	17	84
Zinjibar	14.16%	16	94
As Saiyani	7.96%	9	49
At Taiziyah	4.42%	5	28
Al Makha	4.42%	5	29
Qatabah	3.54%	4	14
Sayun	1.77%	2	6
Ad Dali	0.88%	1	1
Al Hali	0.88%	1	7
Kritar - Sirah	0.88%	1	2
Hays	0.88%	1	4
Hayfan	0.88%	1	3
Ash Shaykh - Othman	0.88%	1	2
Al Mukalla	0.88%	1	3





IDPs Mobility



IDPs Mobility

During the second quarter of 2023, approximately (73 households) (323 individuals) moved within the same governorate.

The main reasons for mobility:

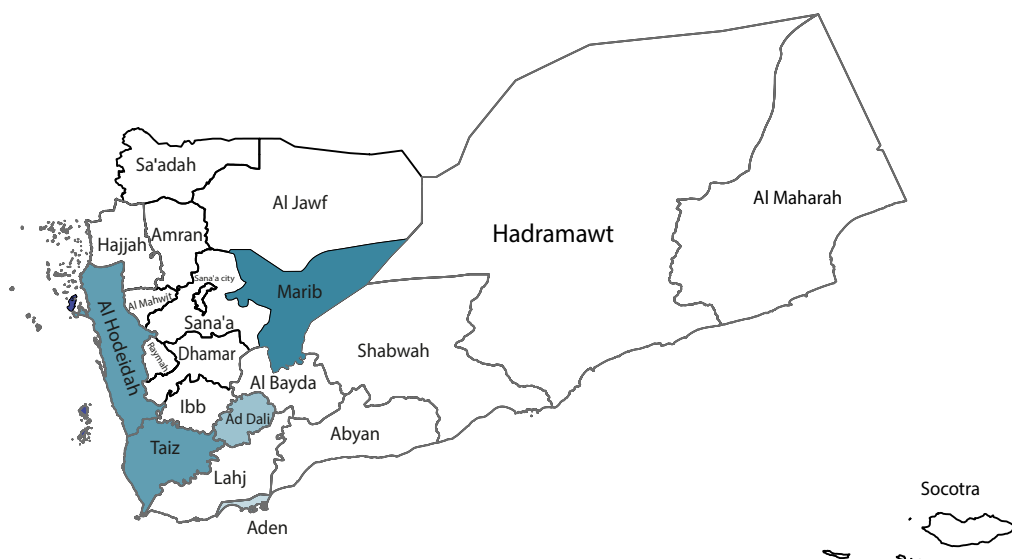
1. The continuation of the armed conflict
2. Searching for livelihood opportunities
3. Violations and prosecution
4. Forced eviction
5. Inability to pay rent
6. Fires and torrents

And other reasons...

* **IDPs on the move:** They are the displaced persons who moved within the governorate of their current displacement from one district to another or between neighborhoods and camps of the same governorate.



Internal Mobility within the Same Governorate



Internal mobility within the same governorate.

Governorates		From district		To district		
Al Hodeidah	22	Al Khukhah	34	Al Hawak	22	88
				Al Khukhah	11	51
				Hays	1	2
				At Tuhayta	5	19
Taiz	14	Mawza	25	Maqbanah	14	69
				At Taiziyah	11	52
Marib	7	Marib City	9	Marib City	8	39
				Marib	1	3

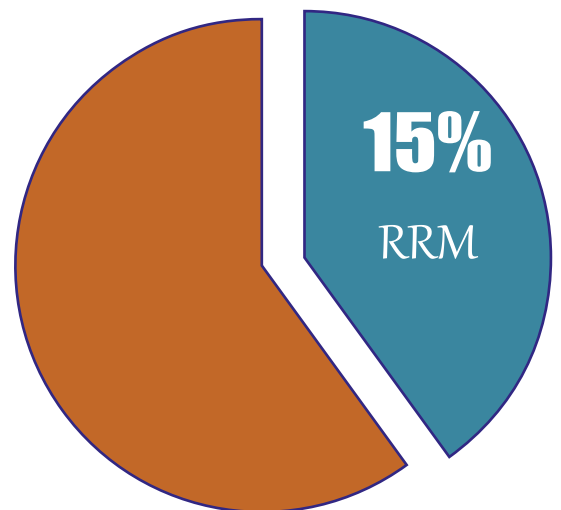


Rapid Response Mechanism (RRM)

During the second quarter of 2023, (01 April - 30 June), approximately (1,370 households) (7,378 individuals) were newly displaced.

This requires that all these households should receive many urgent and rapid interventions to meet their needs; this is one of the rights of the displaced persons. Such humanitarian interventions include various types, the simplest of them, for instance, is: Rapid Response Mechanism (RRM), It was reported that not more than (239) households, i.e. only 15% of the new displacement, received RRM.

Governorates	New displaced HHs	HHs received RRM	% Beneficiaries
Marib	1,008	1	0%
Shabwah	141	112	79%
Aden	67	0	0%
Taiz	62	58	70%
Ad Dali	27	4	9%
Abyan	19	13	57%
Hadramawt	19	11	39%
Al Maharah	14	0	0%
Al Hodeidah	13	40	22%
TOTAL	1,370	239	



Quarterly Report
Second Quarter

01 Apr - 30 Jun

2023



Ex.U.IDPs



Ex.U.IDPs

Contact us

 02-356000

 info@exuye.org

 exuye.org