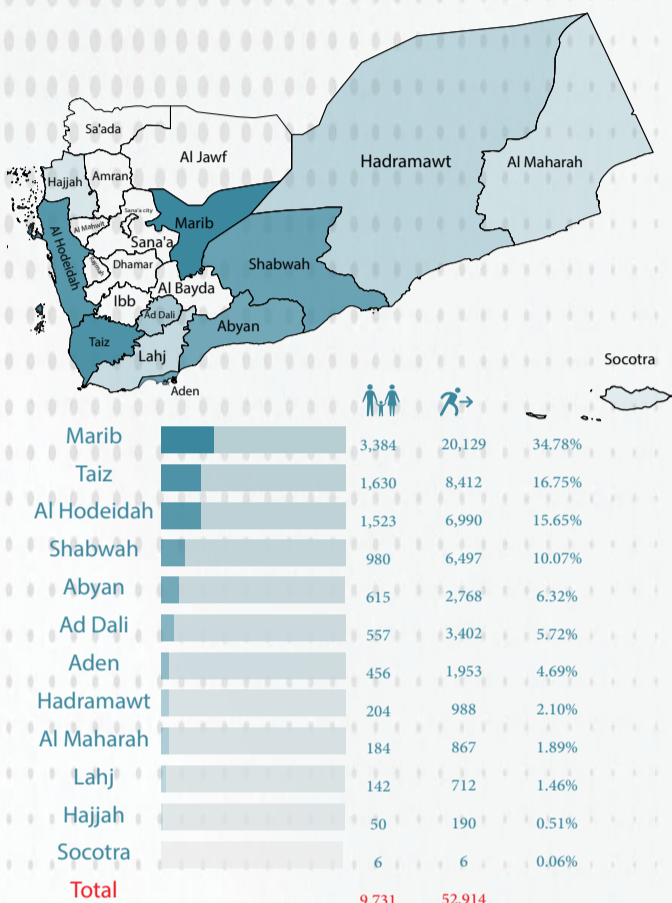


New Displacement

From 1st January to 31st December 2022, 9,731 households (52,914 individuals) were displaced from 21 different governorates (253 districts). They distributed over 12 governorates (67 districts).

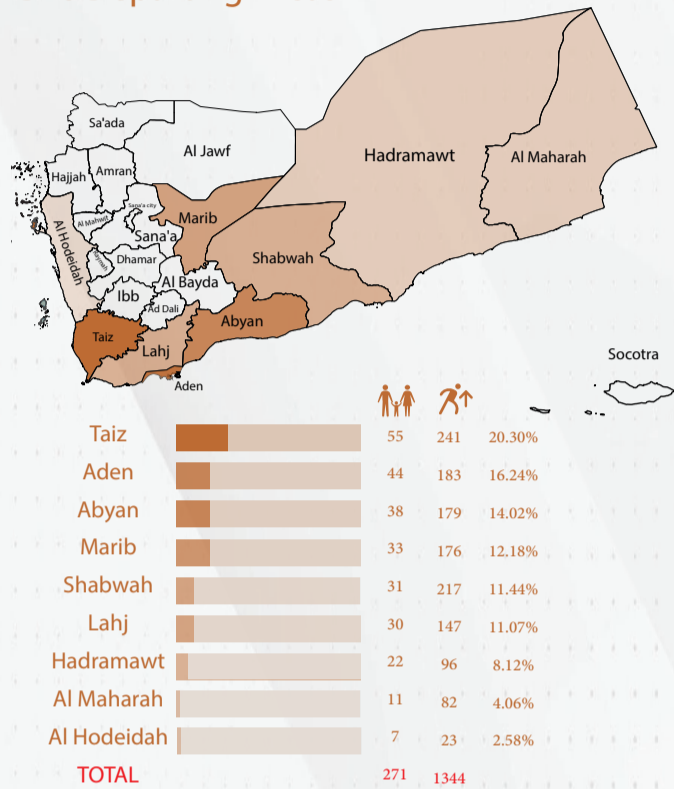
Current Areas of Displacement



IDPs Departed

From 1st January to 31st December 2022, the Executive unit monitored 271 households (1,344 individuals) who left their current displacement governorates to other governorates. They left from 9 different governorates (21 districts) and distributed over 18 governorates (68 districts).

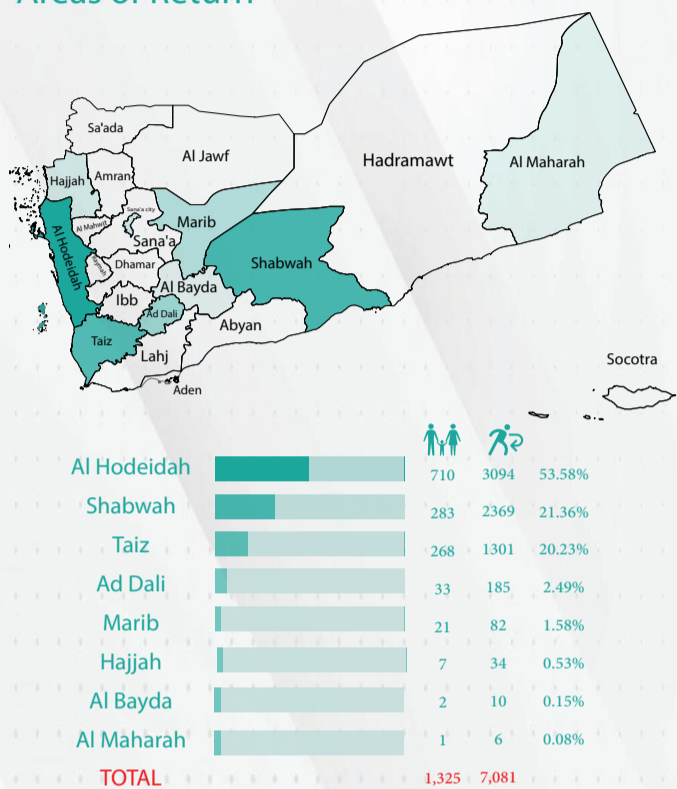
IDPs Departing Areas



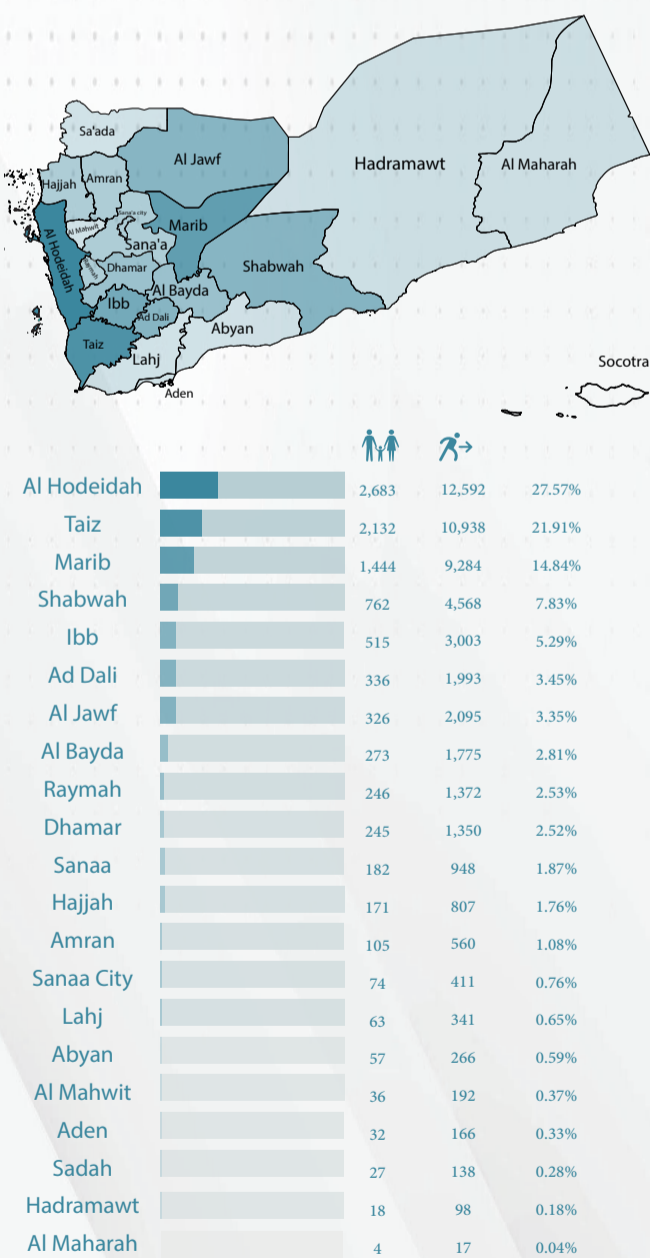
IDP Returnees

From 1st January to 31st December 2022, the Executive Unit tracked 1,325 IDP households (7,081 individuals) who returned to their origin areas. These IDP households returned from 10 different governorates (26 districts) to 8 governorates (46 districts).

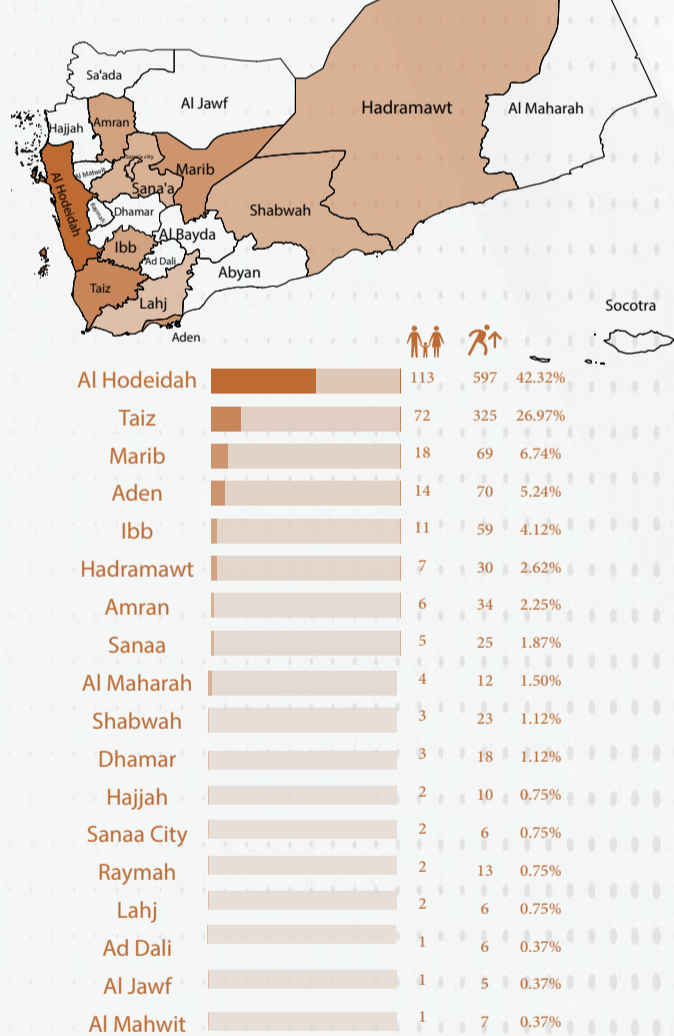
Areas of Return



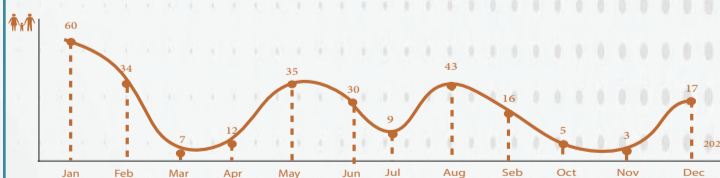
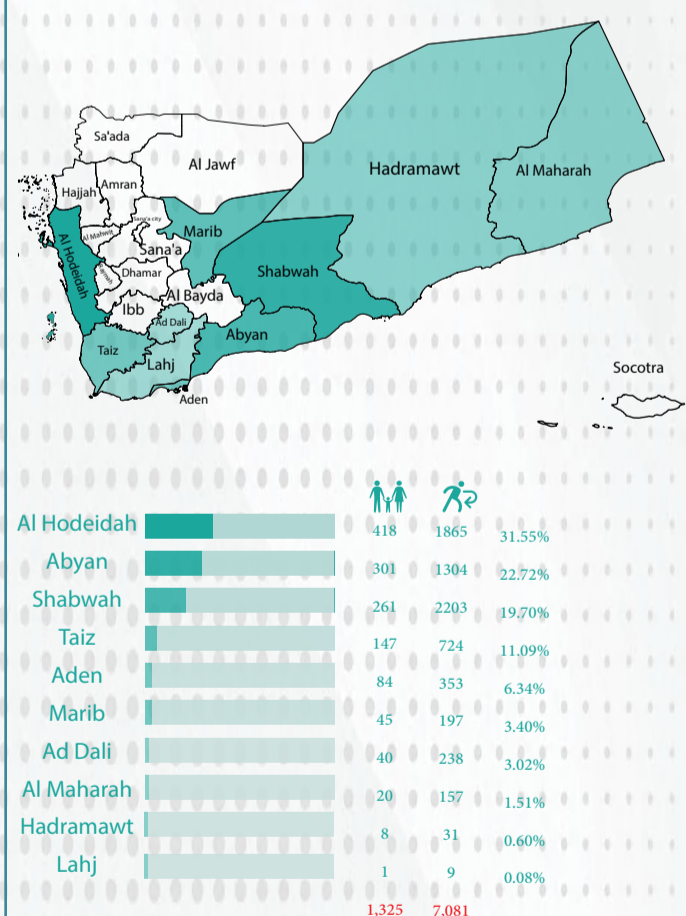
Origin Areas of Displacement



IDPs Arrival Areas



Areas from which IDPs Returned



Rapid Response Mechanism (RRM)

The number of new displaced households received RRM during 2022 was 2,691 (28%).

