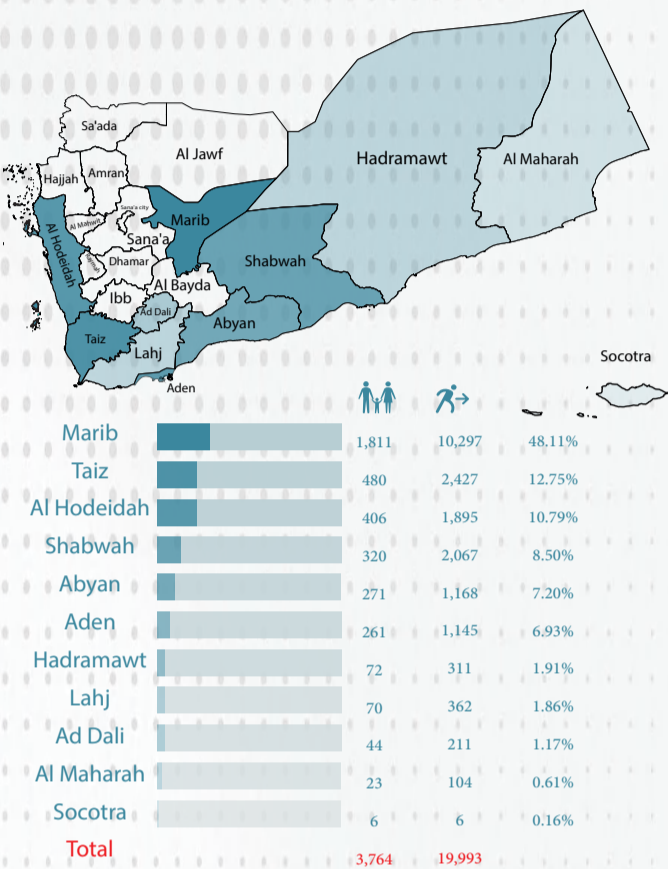


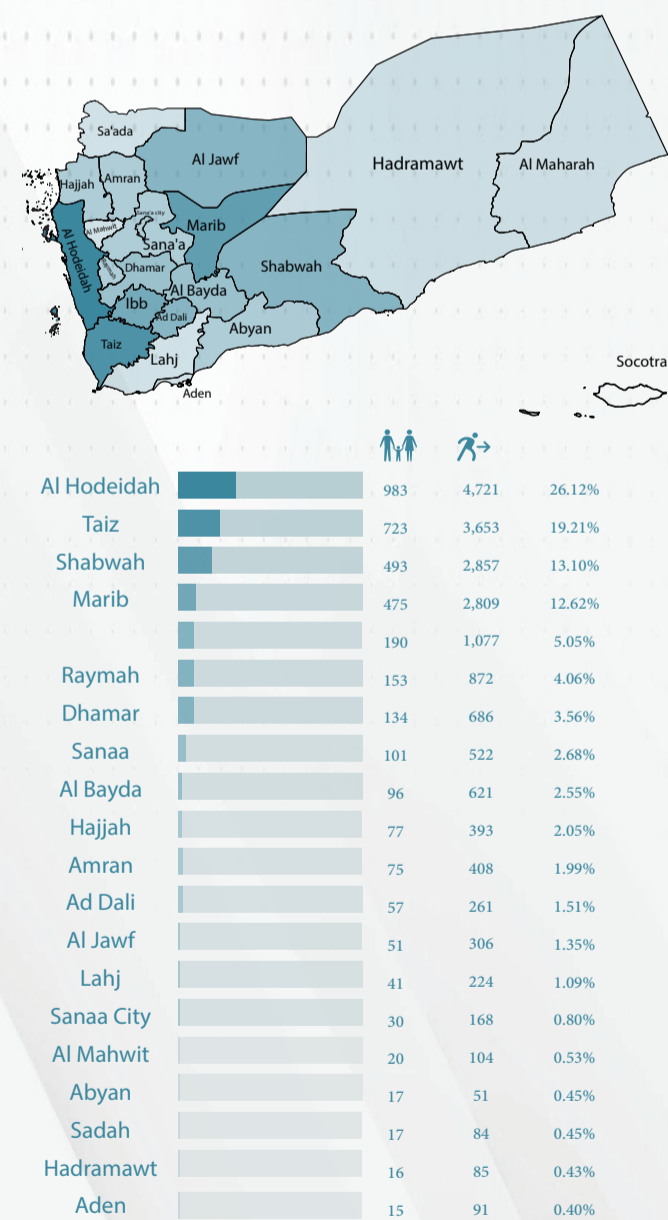
New Displacement

From 1st July to 31st December 2022, 3,764 households (19,993 individuals) were displaced from 20 different governorates (223 districts). They distributed over 11 governorates (50 districts).

Current Areas of Displacement



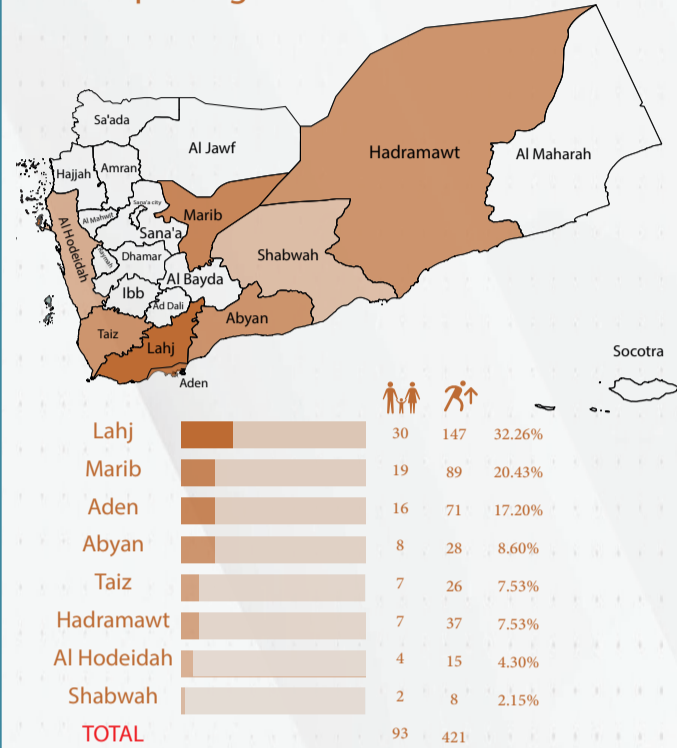
Origin Areas of Displacement



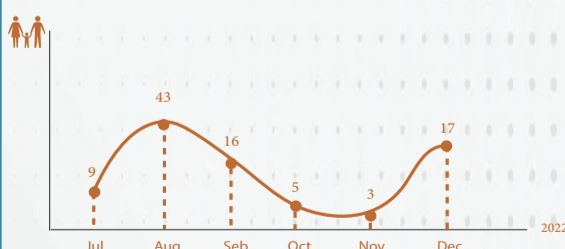
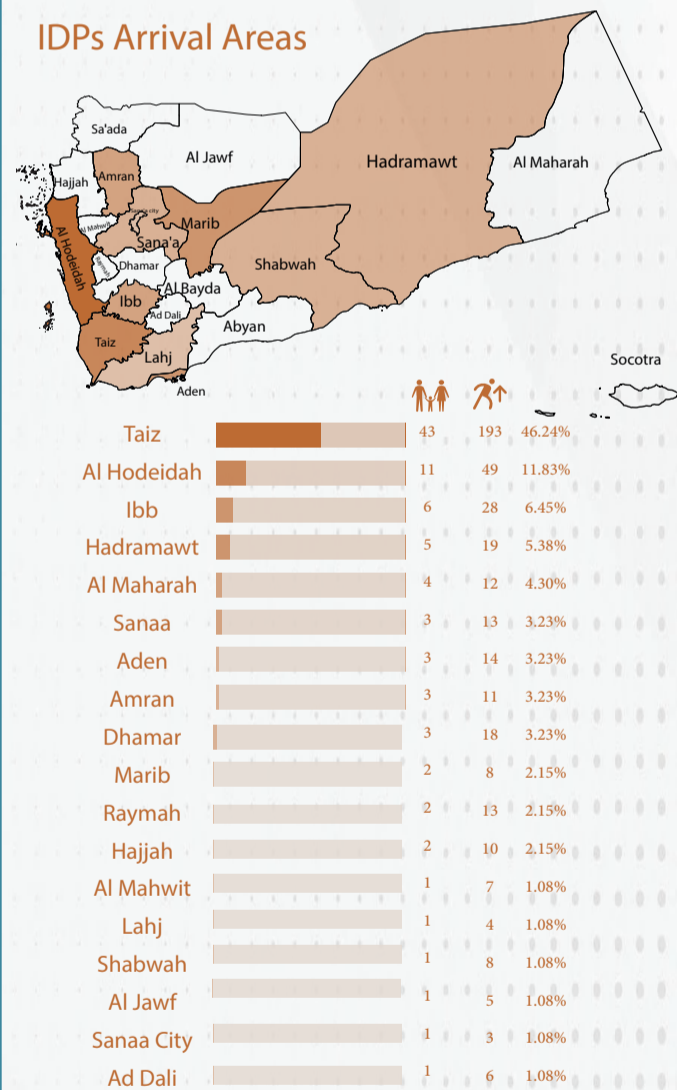
IDPs Departed

From 1st July to 31st December 2022, the Executive unit monitored 93 households (421 individuals) who left their current displacement governorates to other governorates. They left from 8 different governorates (13 districts) and distributed over 18 governorates (41 districts).

IDPs Departing Areas

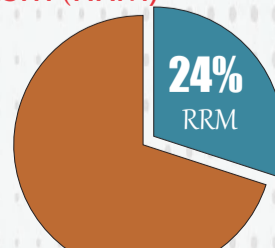


IDPs Arrival Areas



Rapid Response Mechanism (RRM)

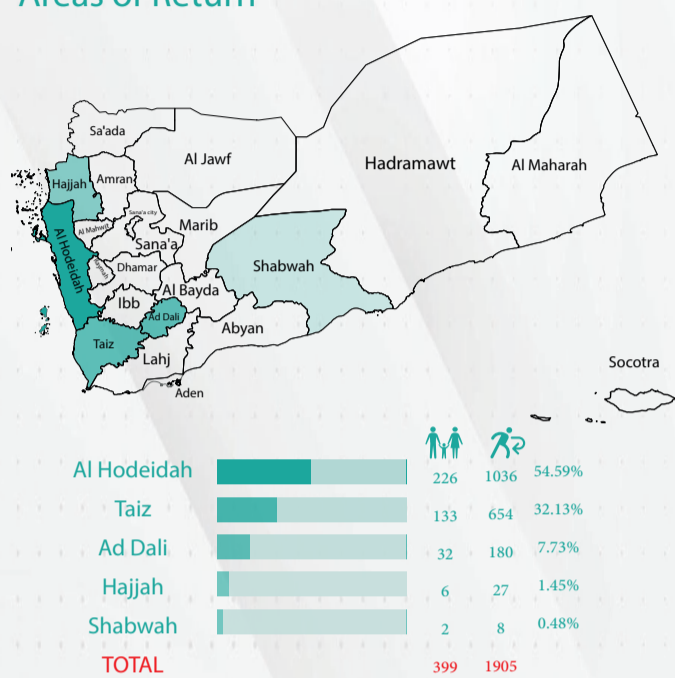
The number of new displaced households received RRM during the second half of 2022 was 907 (24%).



IDP Returnees

From 1st July to 31st December 2022, the Executive Unit tracked 399 IDP households (1,905 individuals) who returned to their origin areas. These IDP households returned from 8 different governorates (18 districts) to 10 governorates (45 districts).

Areas of Return



Areas from which IDPs Returned

