



Displacement Tracking Report (DTR)

Quarterly Report
Fourth Quarter
01 Oct - 31 Des

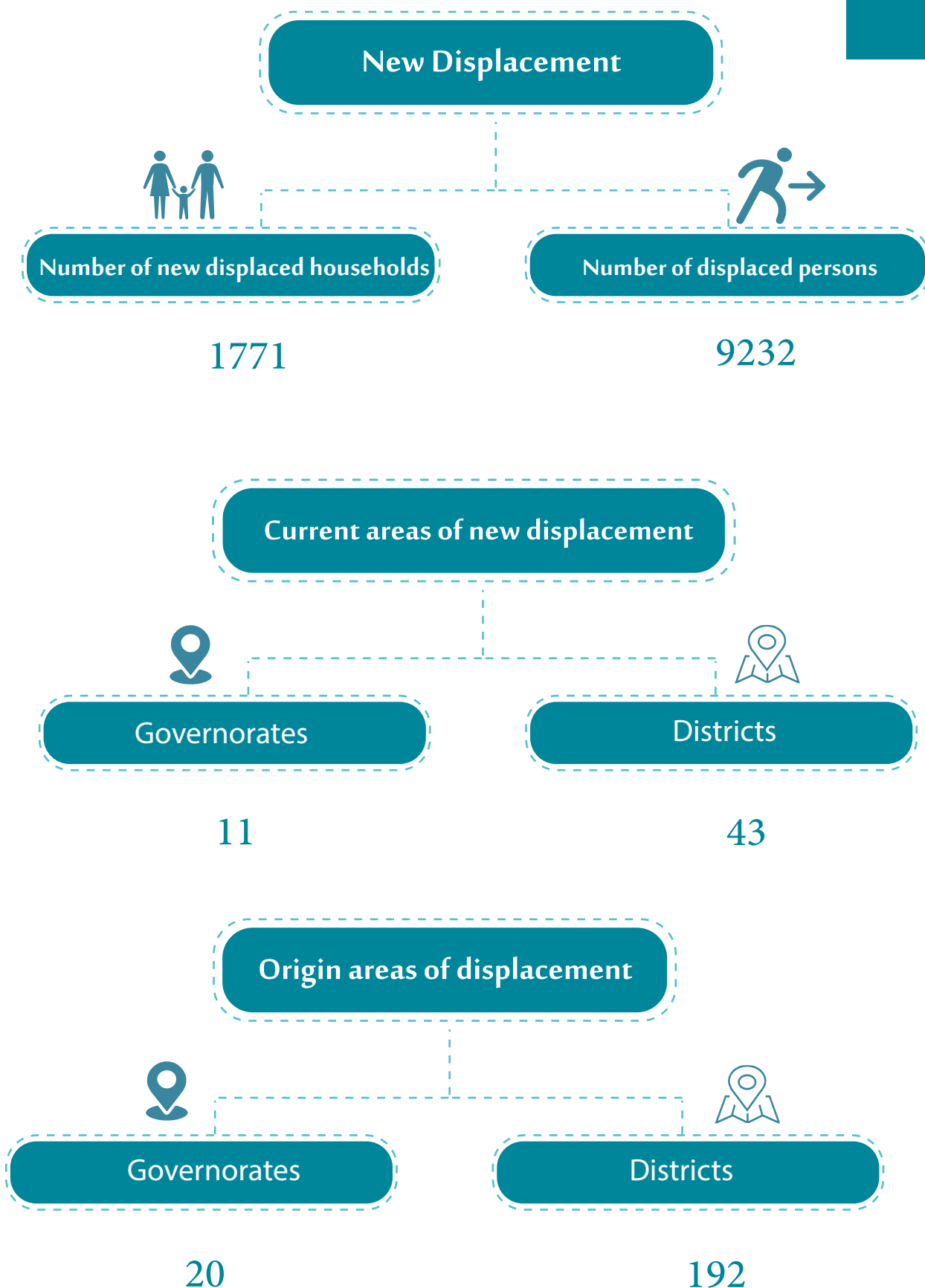
2022



Ex.U.IDPs



New Displacement Movement



New Displacement

During the fourth quarter of 2022, approximately (1771 households) (9,232 individuals) were newly displaced. These households have been come from 20 governorates (192 districts) and they were received by 11 governorates (43 districts).

The main reasons for displacement:

- 1 - Armed conflict
 - 2 - Searching for livelihood opportunities
 - 3 - Violations and prosecutions
- And other reasons...

* **Internally displaced persons (IDPs)** : Persons or groups of persons who had to flee or to leave their homes or places of habitual residence, in particular as a result of or in order to avoid the effects of armed conflict, situations of violence, violations of human rights or natural disasters, and who have not crossed an internationally recognized state border.



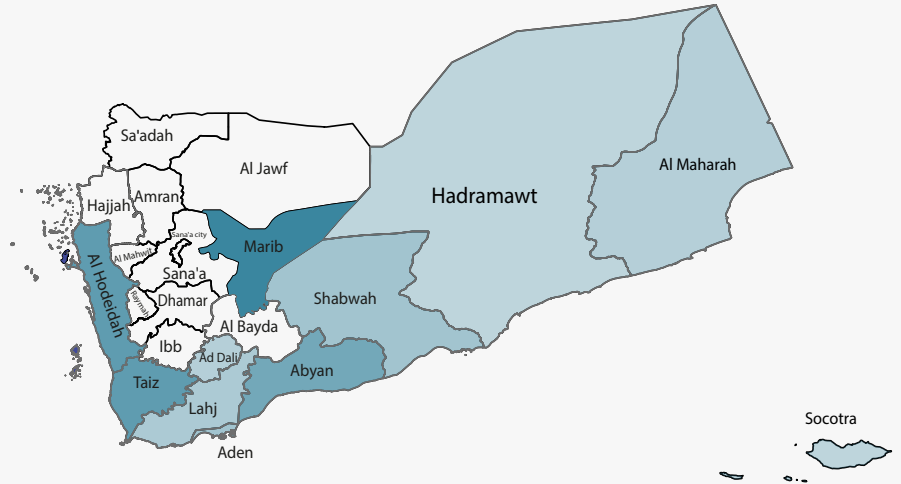
Current Areas of New Displacement

Governorates

During the fourth quarter of 2022, it was recorded that nearly 11 governorates received the new displacement.



Marib	<div><div></div></div>	48.96%	867	4,878
Taiz	<div><div></div></div>	14.68%	260	1,334
Abyan	<div><div></div></div>	7.85%	139	533
Al Hodeidah	<div><div></div></div>	7.68%	136	584
Shabwah	<div><div></div></div>	7.57%	134	814
Aden	<div><div></div></div>	7.11%	126	552
Lahj	<div><div></div></div>	2.99%	53	293
Al Maharah	<div><div></div></div>	1.30%	23	104
Hadramawt	<div><div></div></div>	0.96%	17	85
Ad Dali	<div><div></div></div>	0.56%	10	49
Socotra	<div><div></div></div>	0.34%	6	6
TOTAL			1,771	9,232

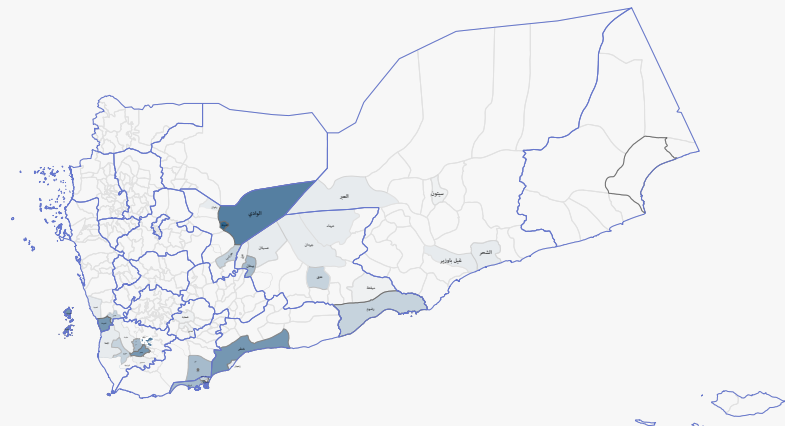


Districts

During the fourth quarter of 2022, it was recorded that nearly 43 districts received the new displacement.

Districts	p.c. %		
Marib City	39.47%	699	3,895
Marib	7.68%	136	791
Al Khukhah	6.10%	108	437
Al Maafer	5.08%	90	407
Khanfar	4.18%	74	325
Al Burayqah	3.05%	54	255
Ahwar	2.82%	50	128
Jabal Habashi	2.77%	49	256
Bayhan	2.26%	40	303
Tuban	2.20%	39	204
Al Mansurah	2.09%	37	146
Ataq	1.81%	32	149
Radum	1.69%	30	190
Al Qahirah	1.58%	28	157
Harib	1.58%	28	168
Hays	1.52%	27	144
Mawza	1.41%	25	107
Al Misrakh	1.41%	25	158
Al Mudhaffar	1.41%	25	158
Al Ghaydhah	1.30%	23	104
Dar Sad	1.19%	21	81
Zinjibar	0.85%	15	80
Khur Maksar	0.79%	14	70

Districts	p.c. %		
Ash Shihr	0.79%	14	64
Al Musaymir	0.68%	12	79
Ar Rawdah	0.62%	11	53
Mayfaah	0.51%	9	49
Ad Dali	0.45%	8	36
Salah	0.40%	7	30
Hadibu	0.34%	6	6
Osaylan	0.34%	6	41
Ash Shamayatayn	0.28%	5	27
Dahr	0.28%	5	26
Raghwan	0.23%	4	24
Al Waziyah	0.17%	3	14
Al Makha	0.17%	3	20
Al Hawtah	0.11%	2	10
Al Abr	0.11%	2	12
Qatabah	0.06%	1	7
At Tuhayta	0.06%	1	3
Habban	0.06%	1	3
Al Hasayn	0.06%	1	6
Sayun	0.06%	1	9



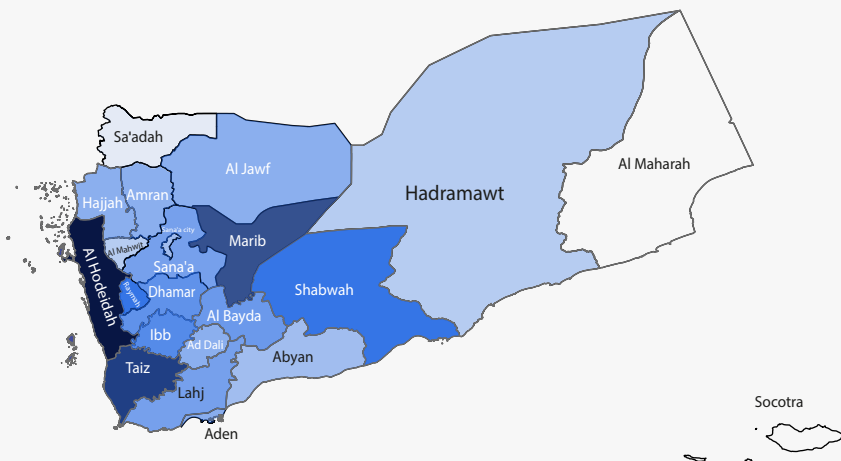


Areas of Origin before Displacement

Governorates

During the fourth quarter of 2022, it was reported that the new IDPs have come from nearly 20 governorates.

Al Hodeidah	٢٤.٧٪	٤٣٩	٢,١٣١
Taiz	٢٣.٣٪	٤١٢	٢,٠٦٤
Marib	١٠.٣٪	١٨٣	١,٠٠٩
Shabwah	٦.٢٪	١١١	٥٢٣
Raymah	٥.٧٪	١٠١	٥٩٨
Ibb	٥.٧٪	١٠١	٥٥١
Dhamar	٤.٧٤٪	٨٤	٤٣٣
Al Bayda	٣.٧٨٪	٦٧	٤٤٥
Sanaa	٣.٩٤٪	٥٢	٢٧٢
Lahj	٣.٢٢٪	٤١	٢٢٤
Amran	٣.٢٪	٣٩	٢١٥
Hajjah	١.٩٨٪	٣٥	١٨٧
Al Jawf	١.٦٤٪	٢٩	١٧٢
Ad Dali	١.١٩٪	٢١	٩٢
Sanaa City	٠.٩٪	١٧	٩٣
Abyan	٠.٧٣٪	١٣	٤١
Al Mahwit	٠.٥٦٪	١٠	٥٥
Sadah	٠.٤٥٪	٨	٣٤
Hadramawt	٠.٣٤٪	٦	٣٣
Aden	٠.١١٪	٢	١٠



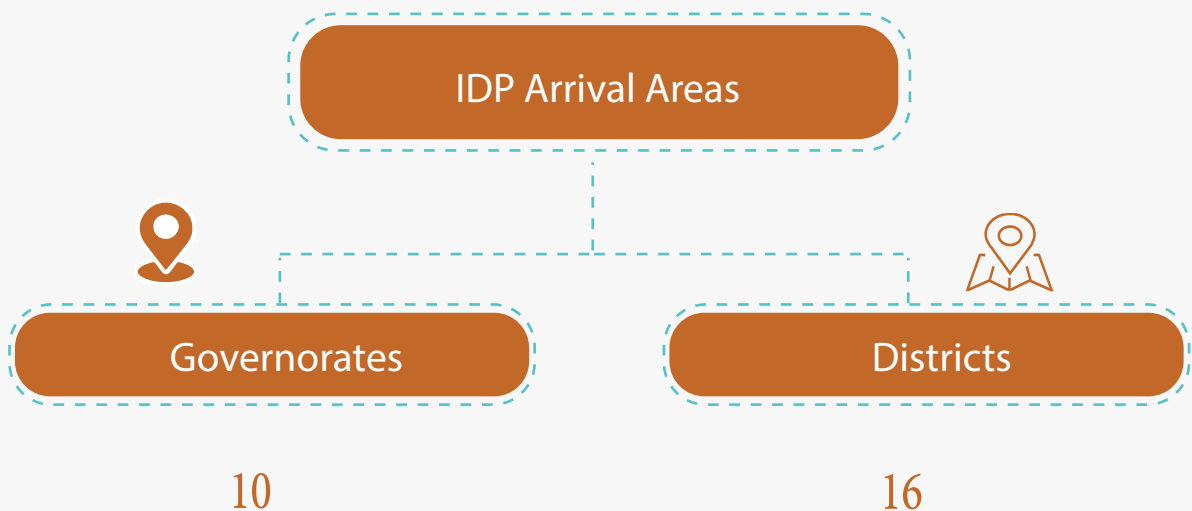
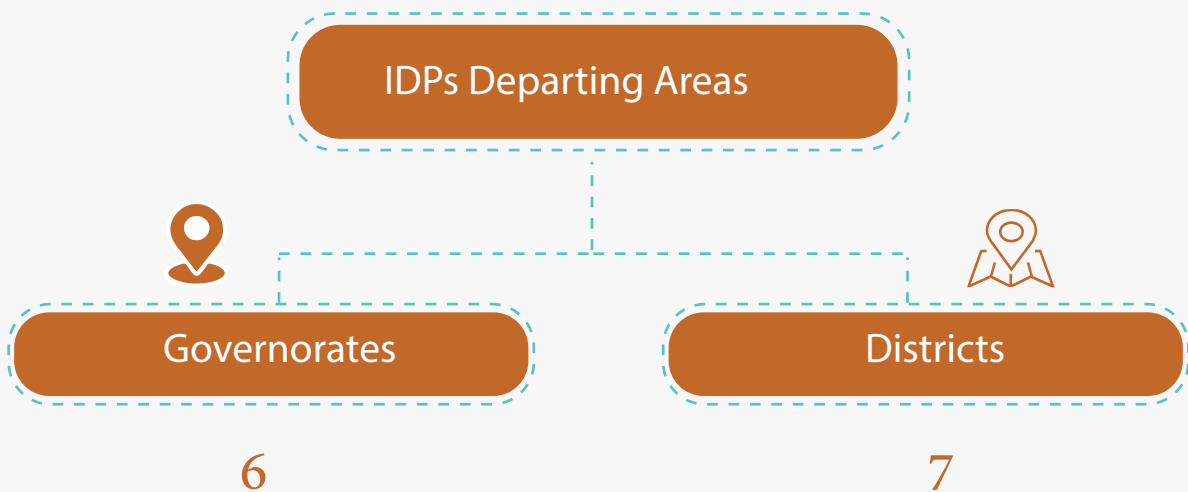
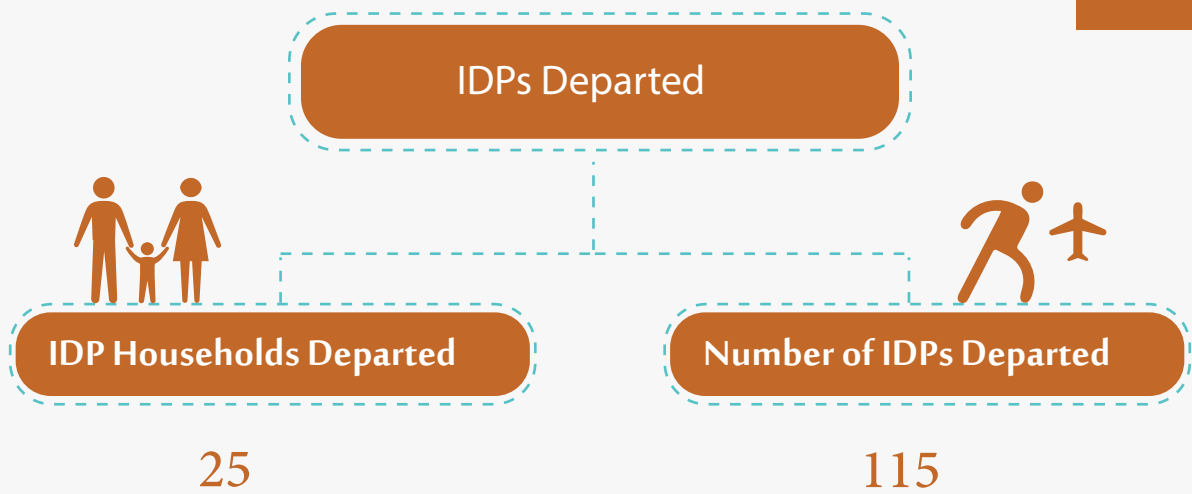
Districts

During the third quarter of 2022, it was reported that the new IDPs have come from nearly 156 districts.

Districts	p.c. %			Districts	p.c. %			Districts	p.c. %			Districts	p.c. %			Districts	p.c. %		
Maqbanah	6.72%	594	119	Hazm Al Odayn	0.68%	71	12	Al Mighlaf	0.28%	24	5	Al Mahabishah	0.17%	3	18	Dhubab	0.06%	1	9
Hays	3.61%	313	64	Mudiyah	0.68%	36	12	Bani Dabyan	0.28%	32	5	Al Bayda	0.17%	3	14	Aflah Al Yaman	0.06%	1	9
Ataq	3.61%	382	64	Khab wa Ash Shaf	0.62%	64	11	Qatabah	0.28%	23	5	Al Maqatirah	0.17%	3	11	Zinjibar	0.06%	1	5
Al Jubah	3.22%	348	57	Al Mudhaffar	0.62%	60	11	Rada	0.28%	32	5	Al Bayda City	0.17%	3	18	Bani Hushaysh	0.06%	1	5
Al Hawak	2.65%	183	47	Wusab Al Aali	0.62%	62	11	Yarim	0.28%	30	5	Amran	0.17%	3	18	Ash Shaykh Othman	0.06%	1	5
Al Maafer	2.43%	196	43	Sabir Al Mawadim	0.56%	53	10	Bani Matar	0.28%	15	5	Shaharah	0.17%	3	13	Al Mansurah	0.06%	1	5
Bart Al Faqih	2.26%	204	40	Ans	0.56%	60	10	Adh Dhahir	0.28%	17	5	Eyal Surayh	0.17%	3	18	Mayfaah	0.06%	1	6
As Said	2.20%	98	39	Al Mawasit	0.51%	21	9	Arhab	0.28%	30	5	Maswar	0.17%	3	18	Badan	0.06%	1	7
As Salafiyah	2.15%	223	38	Al Khukhah	0.51%	55	9	Sharab As Salam	0.28%	30	5	Al Khabt	0.17%	3	17	Suwayr	0.06%	1	6
Mawza	2.09%	186	37	Al Haymah Ad Dakhliah	0.51%	30	9	As Saddah	0.28%	27	5	Thula	0.17%	3	17	Jihanah	0.06%	1	6
Al Jarrahi	2.09%	182	37	Al Odayn	0.45%	46	8	Hayfan	0.28%	23	5	Dawran Anis	0.17%	3	15	Manakhah	0.06%	1	4
Raghwat	1.98%	211	35	Madghal Al Jidan	0.45%	44	8	Sayun	0.28%	27	5	Hufash	0.17%	3	13	Sharas	0.06%	1	6
Salah	1.92%	156	34	Al Hada	0.45%	51	8	Khawlan	0.28%	30	5	Kushar	0.17%	3	15	Hayran	0.06%	1	6
Zabid	1.75%	147	31	Az Zuhrah	0.45%	44	8	Khamir	0.28%	24	5	Majzar	0.17%	3	13	Ibb	0.06%	1	6
At Taiziyah	1.75%	169	31	Wusab As Safil	0.45%	45	8	Bura	0.23%	24	4	Mashrah Wa Hadnan	0.11%	2	14	Bani Al Awam	0.06%	1	5
Al Hali	1.69%	136	30	Al Haymah Al Kharjiyah	0.45%	48	8	Wald Rabi	0.23%	24	4	Huth	0.11%	2	12	Shuub	0.06%	1	6
Ad Durayhim	1.58%	89	28	Dawran Anis	0.45%	44	8	As Sabin	0.23%	16	4	Markhab Al Olya	0.11%	2	6	Al Humaydat	0.06%	1	6
Al Marawiah	1.41%	142	25	Marib City	0.40%	30	7	Ibb	0.23%	22	4	Dhi Naim	0.11%	2	9	Dhamar City	0.06%	1	6
Nati	1.41%	205	25	Dhi As Sufal	0.40%	42	7	Al Jamimah	0.23%	23	4	Saqin	0.11%	2	12	Ash Shuayb	0.06%	1	6
Al Musaymir	1.41%	142	25	Mukayras	0.40%	41	7	Az Zahir - Al Bayda	0.23%	24	4	As Sawadiyah	0.11%	2	12	At Tawilah	0.06%	1	7
Bilad Attam	1.36%	148	24	Al Qubaytah	0.40%	39	7	Mahliyah	0.23%	26	4	Ash Sharyah	0.11%	2	12	Al Qahirah	0.06%	1	4
Jabal Habashi	1.30%	129	23	Jabal Ash sharq	0.40%	24	7	Ad Dali	0.23%	22	4	Bani Al Harith	0.11%	2	12	Al Ghayl	0.06%	1	6
Mawiyah	1.24%	118	22	As Silw	0.40%	31	7	Numan	0.23%	18	4	Kharif	0.11%	2	12	Al Hasayn	0.06%	1	2
Harir	1.13%	104	20	Hobeish	0.40%	41	7	An Nadirah	0.23%	22	4	Al Madaribah Wa Al Asrah	0.11%	2	12	Qafat Odhar	0.06%	1	6
Al Jafariyah	1.13%	115	20	Nihm	0.34%	36	6	Hajjah	0.23%	16	4	Ash Shahil	0.11%	2	11	Al Mukalla	0.06%	1	6
Al Mansuriyah	1.13%	92	20	Al Waziyah	0.34%	37	6	Ad Dohi	0.23%	16	4	Khayran Al Muharaq	0.11%	2	13	As Salif	0.06%	1	6
At Tuhayta	1.07%	100	19	Al Husha	0.34%	28	6	Jahaf	0.23%	11	4	Sami	0.11%	2	16	As Saiyani	0.06%	1	4
Bajil	1.02%	106	18	Jiblah	0.34%	20	6	Abs	0.23%	24	4	At Taffah	0.11%	2	11	Al Wehdah	0.06%	1	5
Az Radmah	1.02%	101	18	As Suknah	0.34%	29	6	Kusmah	0.23%	24	4	Ath Thawrah	0.11%	2	12	Markhab As Sufia	0.06%	1	8
Al Qaf	1.02%	97	18	Al Abdiyah	0.34%	35	6	As Safiyah	0.17%	18	3	Kamaran	0.11%	2	2	Al Maslub	0.06%	1	6
Al Misrah	0.90%	96	16	Al Manar	0.34%	27	6	Hamdan	0.17%	17	3	Sanhan wa Bani Bahlul	0.11%	2	12	Tur Al Bahah	0.06%	1	2
Rahabah	0.90%	92	16	Maghrib Ans	0.34%	28	6	Harad	0.17%	18	3	Shibam Kawakan	0.11%	2	12	Barat Al Anan	0.06%	1	6
Otnah	0.90%	71	16	Jabal Murad	0.34%	33	6	Kuhlan Afar	0.17%	13	3	Al Munirah	0.11%	2	11	As Sawd	0.06%	1	6
Sirwah	0.85%	84	15	Az Zaydah	0.34%	37	6	Al Makha	0.17%	14	3	Al Makhadir	0.11%	2	6	Bilad Ar Rus	0.06%	1	7
Jabal Ras	0.85%	87	15	Dimnat Khadir	0.34%	30	6	Radfan	0.17%	18	3	Maswarah	0.11%	2	13	Marib	0.06%	1	8
Al Jabin	0.85%	88	15	As Sudah	0.28%	30	5	Aslam	0.17%	10	3	As Sawmah	0.11%	2	12	Sadah	0.06%	1	5
Al Hazm	0.79%	84	14	Alluhayah	0.28%	34	5	Harf Sufyan	0.17%	18	3	Main	0.11%	2	12	Jabal Eyal Yazid	0.06%	1	4
Ash Shamayatayn	0.79%	56	14	Sharab Ar Rawnah	0.28%	22	5	Ayn	0.17%	17	3	At Tahir	0.11%	2	12	Bayhan	0.06%	1	6
Al Mina	0.73%	68	13	Marib City	0.28%	31	5	Raydah	0.17%	13	3	Mudhakhirah	0.11%	2	9	Ar Rujum	0.06%	1	6



IDPs Departure Movement



IDPs Departure

During the fourth quarter of 2022, approximately (25 households) (115 individuals) left their current locations of displacement.

These households departed from 6 governorates (7 districts), and 10 governorates (16 districts) received them.

The main reasons for displacement:

1. Renewed armed conflict
2. Searching for better livelihood opportunities
3. Violations and prosecutions
4. Forced eviction
5. Desire to return home
6. Inability to pay rent
7. Fires and torrents
8. Diseases and epidemics
9. IDPs departed do not receive support from organizations.

And other reasons...

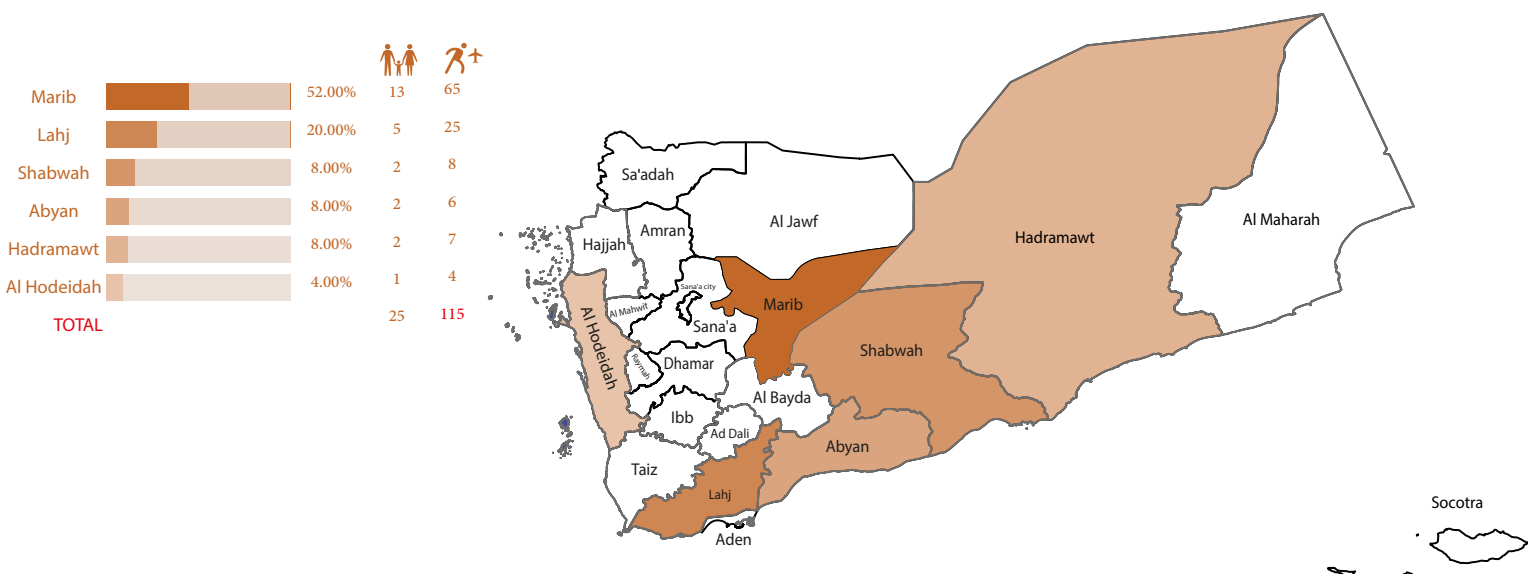
***IDPs Departed:** They are the IDPs who left their current governorates of displacement for other ones.



IDPs Departing Areas

Governorates

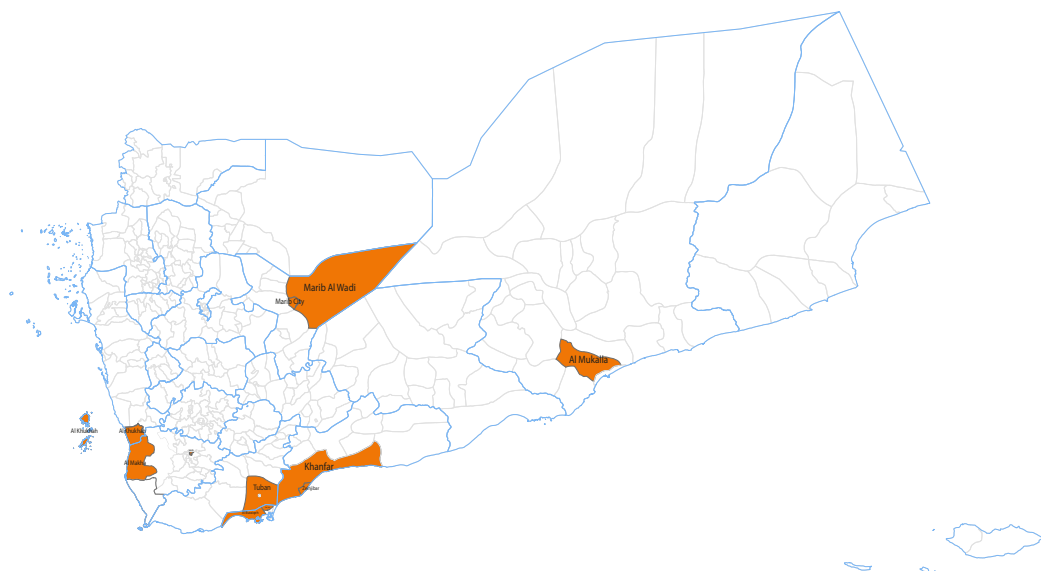
During the fourth quarter of 2022, IDPs departed from nearly 6 governorates to other ones.



Districts

During the fourth quarter of 2022, IDPs have departed from nearly 7 districts to other governorates.

Districts	p.c. %	Icon 1 (Family)	Icon 2 (IDP)
Marib City	52.00%	13	65
Tuban	20.00%	5	25
Khanfar	8.00%	2	6
Bayhan	8.00%	2	8
As Sawm	4.00%	1	4
Al Khukhah	4.00%	1	4
Al Mukalla	4.00%	1	3
		25	115



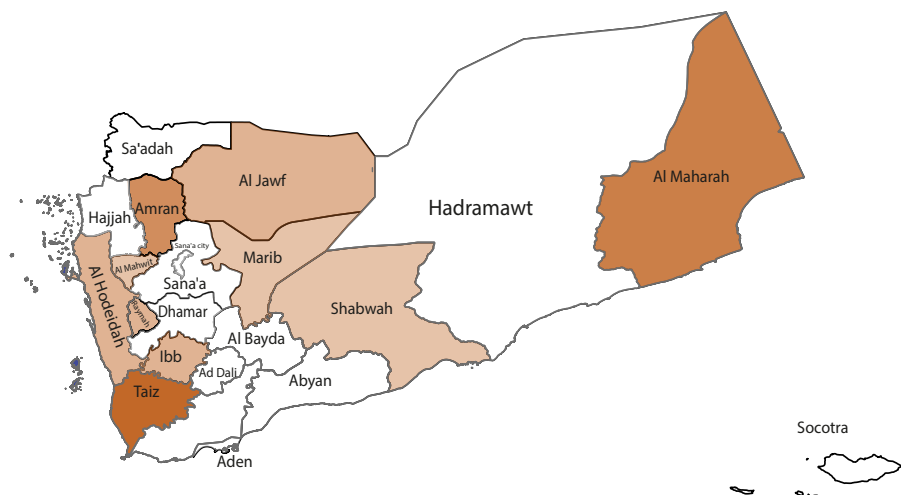


IDPs Arrival Areas

Governorates

During the fourth quarter of 2022, It was recorded that the new IDPs arrived to nearly 10 governorates.

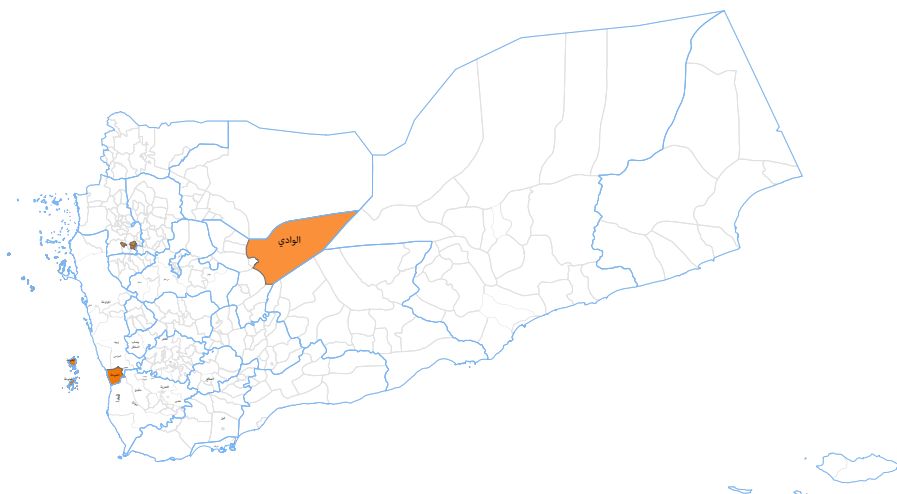
Governorates	p.c. %			
Taiz	32.00%	8	37	<div><div></div></div>
Al Maharah	16.00%	4	12	<div><div></div></div>
Amran	12.00%	3	11	<div><div></div></div>
Ibb	8.00%	2	11	<div><div></div></div>
Al Hodeidah	8.00%	2	8	<div><div></div></div>
Raymah	8.00%	2	13	<div><div></div></div>
Al Jawf	4.00%	1	5	<div><div></div></div>
Al Mahwit	4.00%	1	7	<div><div></div></div>
Shabwah	4.00%	1	8	<div><div></div></div>
Marib	4.00%	1	3	<div><div></div></div>



Districts

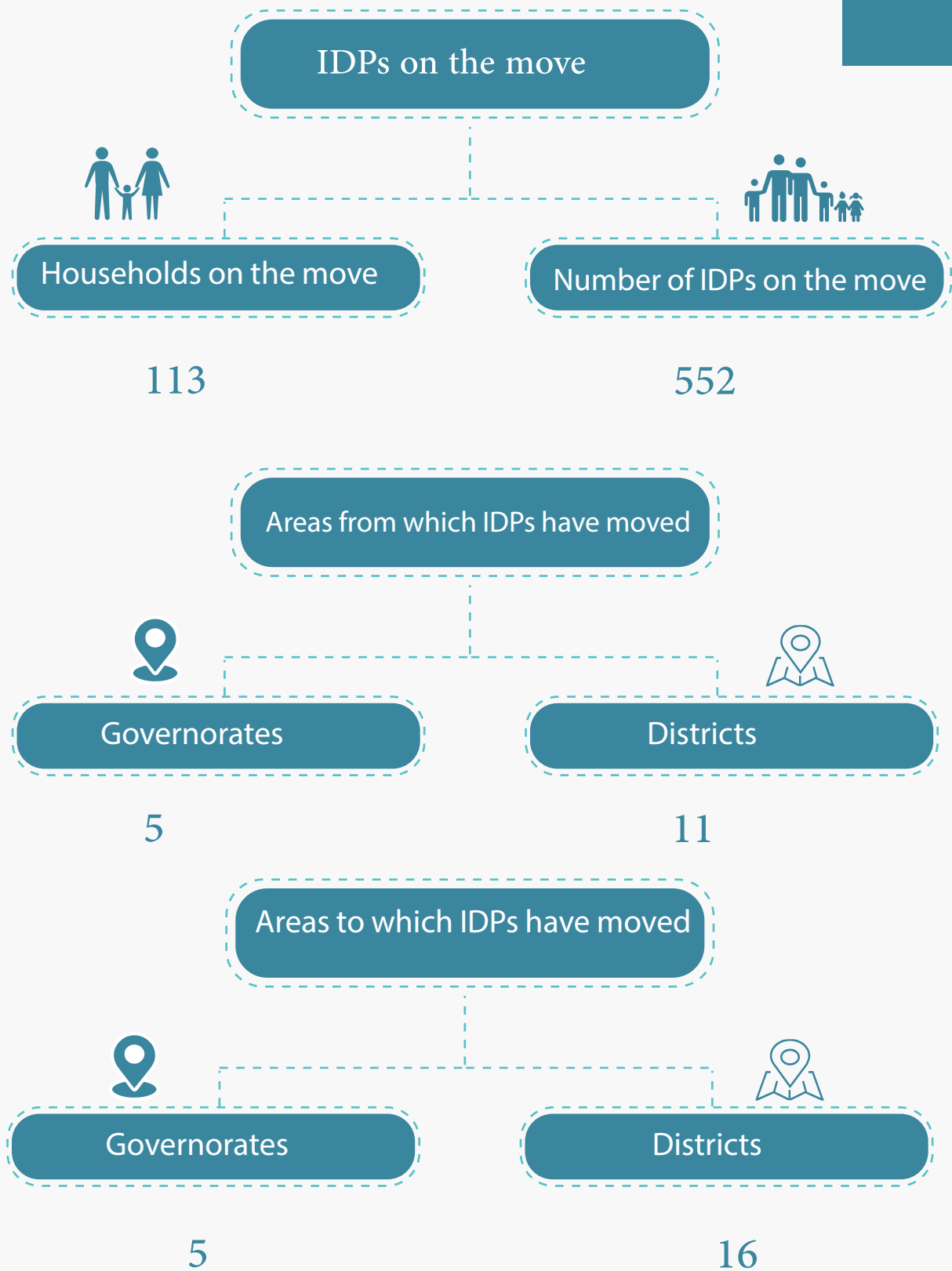
During the fourth quarter of 2022, it was reported that the new IDPs arrived to nearly 16 districts.

Districts	p.c. %		
Maqbanah	24.00%	6	29
Ash Shamayatayn	8.00%	2	8
Qishn	8.00%	2	6
As Salafiyyah	8.00%	2	13
Al Khukhah	8.00%	2	8
As Sudah	4.00%	1	5
Ataq	4.00%	1	8
Hufash	4.00%	1	7
As Saddah	4.00%	1	5
Shaharah	4.00%	1	1
Al Hazm	4.00%	1	5
Al Ashah	4.00%	1	5
Marib City	4.00%	1	3
Al Masilah	4.00%	1	4
Al Ghaydhah	4.00%	1	2
Yarim	4.00%	1	6
TOTAL		25	115





IDPs Mobility



IDPs Mobility

During the fourth quarter of 2022, approximately (113 households) (552 individuals) moved within the same governorate.

The main reasons for mobility:

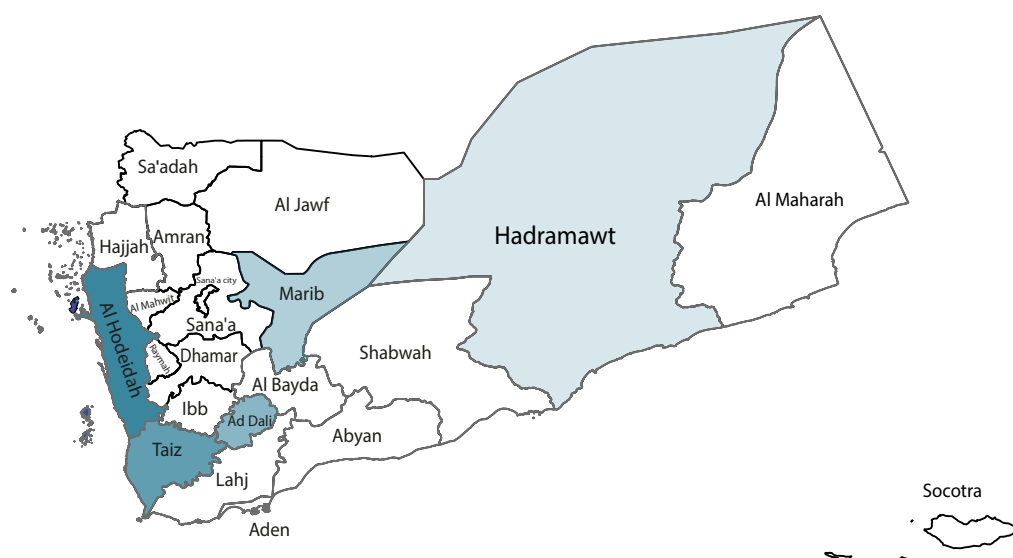
1. The continuation of the armed conflict
2. Searching for livelihood opportunities
3. Violations and prosecution
4. Forced eviction
5. Inability to pay rent
6. Fires and torrents

And other reasons...

* **IDPs on the move:** They are the displaced persons who moved within the governorate of their current displacement from one district to another or between neighborhoods and camps of the same governorate.



Internal Mobility within the Same Governorate



Internal mobility within the same governorate.

Governorates		From district		To district		
Al Hodeidah	90	Al Khukhah	٧٦	Al Khukhah	48	216
				Hays	17	82
				Kamaran	6	36
				Al Hali	4	24
				Al Hawak	1	4
		At Tuhayta	١٢	Al Khukhah	12	67
		Hays	٢	Al Khukhah	2	6
Taiz	11	Al Makha	٥	Maqbanah	2	7
				Mawza	1	5
				Mawiyah	1	5
				Sabir Al Mawadim	1	6
		Al Mudhaffar	٣	Al Mudhaffar	3	29
		Jabal Habashi	١	Maqbanah	1	11
		Mawza	١	Al Makha	1	2
		Al Maafer	١	Al Maafer	1	3
Ad Dali	8	Ad Dali	٨	Qatabah	8	32
Marib	2	Marib City	٢	Harib Al Qaramish	1	5
				Marib City	1	5
Hadramawt	2	As Sawm	٢	Tarim	2	7

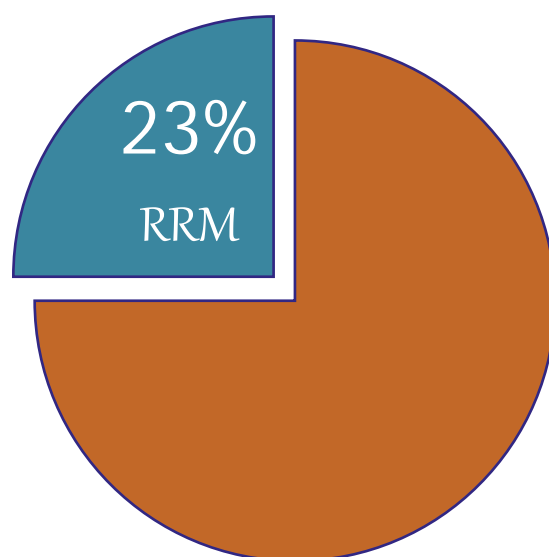


Rapid Response Mechanism (RRM)

During the fourth quarter of 2022, (01 October - 31 December), approximately (1,771 households) (9,232 individuals) were displaced currently .

This requires that all these households should receive many urgent and rapid interventions to meet their needs; this is one of the rights of the displaced persons. Such humanitarian interventions include various types, the simplest of them, for instance, is: Rapid Response Mechanism (RRM), It was reported that not more than (409) households, i.e. only 23% of the new displacement, received RRM.

Governorates	New displaced HHs	HHs received RRM	% Beneficiaries
Marib	867	41	5%
Taiz	260	159	61%
Abyan	139	61	44%
Al Hodeidah	136	26	19%
Shabwah	134	83	62%
Aden	126	0	0%
Lahj	53	29	55%
Al Maharah	23	0	0%
Hadramawt	17	0	0%
Ad Dali	10	10	100%
Socotra	6	0	0%
TOTAL	1771	409	23%



Quarterly Report
ForthQuarter

01 Oct - 31 Dec

2022



Ex.U.IDPs



Ex.U.IDPs

Contact us



02-356000



info@exuye.org



exuye.org