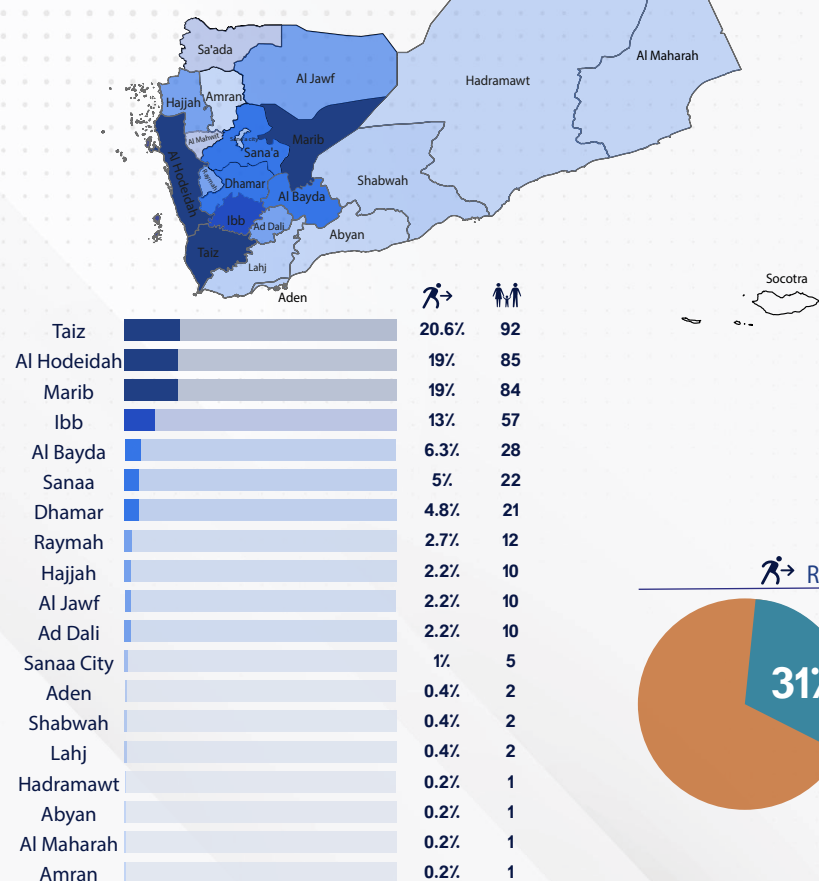


From 01 January to 31 May, 2022, the Executive Unit for IDPs monitored 5,136 households (28,235 individuals) as new IDPs, who were displaced from 21 different governorates and they were distributed among 11 governorates.

The Executive Unit for IDPs also recorded 446 households (2,402 individuals) who were newly displaced during the period between 31 - 01 May, 2022. Most of these households (%52) were displaced to Marib Governorate, and (%28) of them were displaced to Shabwah Governorate and Taiz Governorate, while (%20) of households were displaced to the governorates of Al Hodeidah, Abyan, Aden, Hadramawt, Lahj, Al Dali, and Al Maharah. For the same period, it was also recorded that 100 households (495 individuals) left their current areas of displacement, the majority of these households (%80) left from the governorates of Abyan, Shabwah, and Marib, while (%20) of them departed from the governorates of Aden, Taiz, and Hadramawt.

IDP HHs : Governorate of Origin



446
IDP HHs



2,402
IDPs

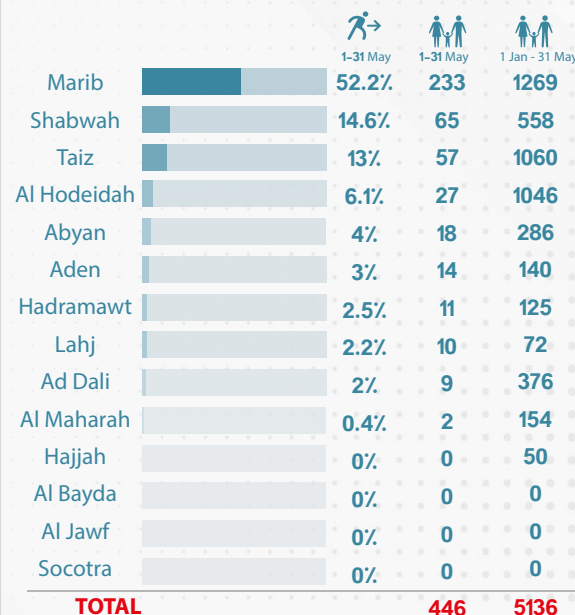
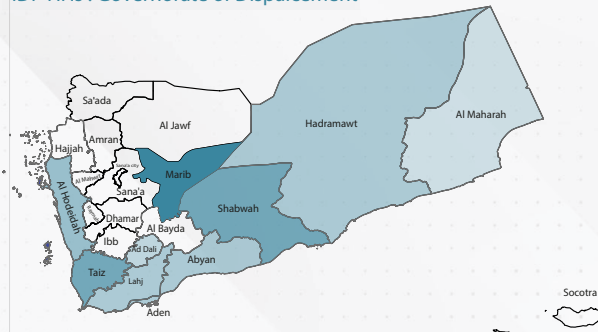


100
IDP HHs
Departed



495
IDPs
Departed

IDP HHs : Governorate of Displacement



IDP HHs Departed from Governorates

