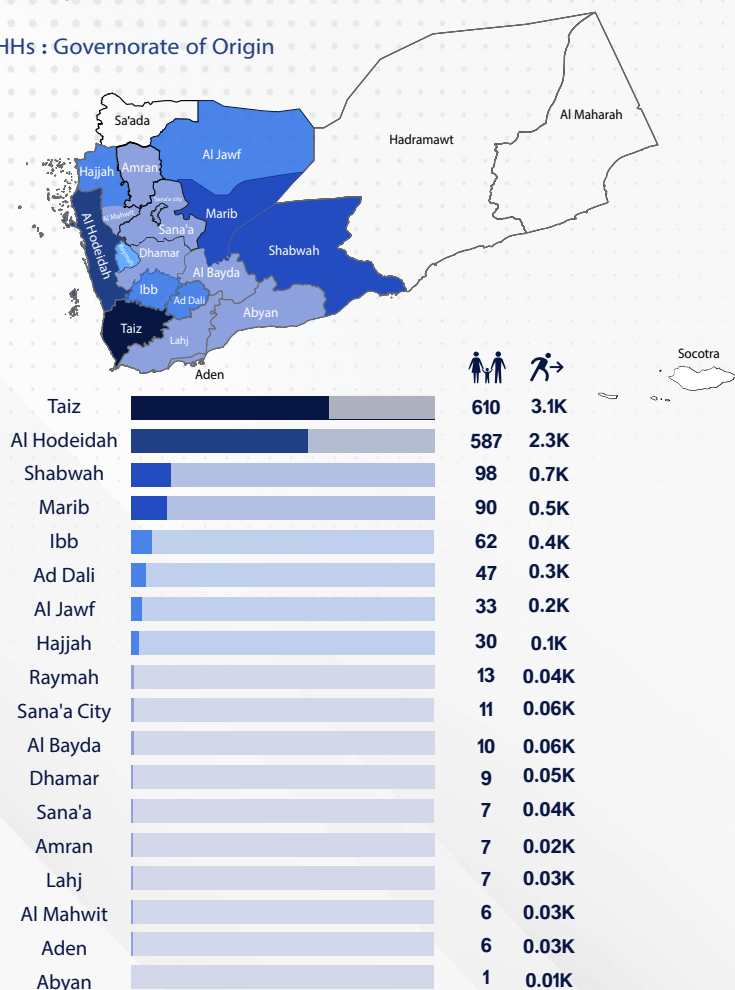


The continuation of the war in Yemen resulted in an increase in the movement of internal displacement from conflict areas into safe governorates and areas. During February 2022, (1,634 Households) (7,953 individuals) were displaced. The governorates of Marib, Shabwah, Al Hodeidah and Taiz received (%82) of the displaced households, while (%18) of the displaced households were distributed across the governorates of Aden, Abyan, Ad Dali, Hadramawt, Al Maharah, Hajjah, and Lahj. Regarding the movement of IDPs departure, (88 households) (412 individuals) left during February 2022. Most of IDPs who left the governorates were from Taiz, Marib, and Abyan.

The statistics indicate that the households were displaced from 18 governorates. Ninety-five percent of the households were displaced from the governorates of Taiz, Al Hodeidah, Shabwah, Marib, Ibb, and Ad Dali, Al Jawf, Hajjah while (%5) HHs were displaced from the governorates of Raymah, Sana'a city, Al Bayda, Dhamar, Sana'a, Amran, and Lahj.

#### IDP HHs : Governorate of Origin



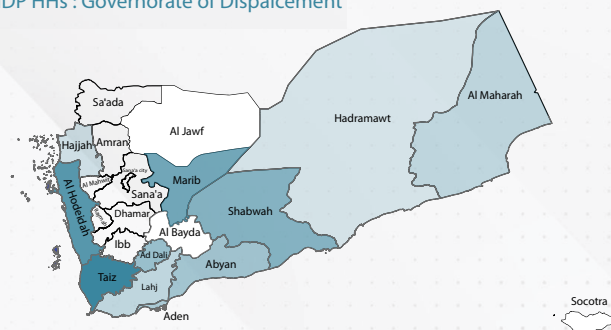
**1,634**  
IDP HHs

**7,953**  
IDPs

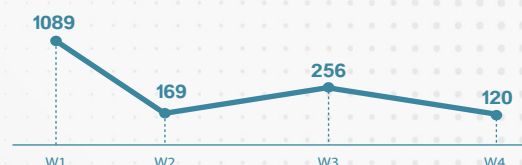
**88**  
IDP HHs  
Departed

**412**  
IDPs  
Departed

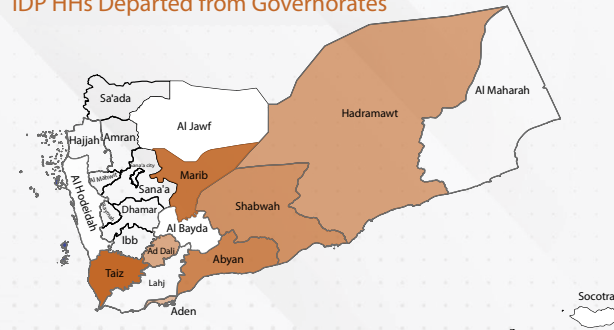
#### IDP HHs : Governorate of Displacement



	1-28 Feb	1-28 Feb	1 Jan - 28 Feb
Taiz	638	3.4K	878
Al Hodeidah	376	1.4K	951
Marib	189	1.0K	746
Shabwah	129	0.8K	308
Ad Dali	96	0.6K	215
Abyan	82	0.3K	175
Aden	53	0.1K	84
Lahj	34	0.2K	53
Al Maharah	31	0.1K	50
Hajjah	25	0.1K	50
Hadramawt	2	0.01K	97
Socotra	0	0.0K	0
Al Bayda	0	0.0K	0
Al Jawf	0	0.0K	0



#### IDP HHs Departed from Governorates



	1-28 Feb	1 Jan - 28 Feb
Taiz	29	0.1K
Marib	27	0.1K
Abyan	17	0.1K
Shabwah	5	0.04K
Hadramawt	5	0.02K
Ad Dali	3	0.02K
Aden	2	0.01K
Lahj	0	0.0K
Al Maharah	0	0.0K
Hajjah	0	0.0K
Al Hodeidah	0	0.0K
Socotra	0	0.0K
Al Bayda	0	0.0K
Al Jawf	0	0.0K

